

Product datasheet for **TA318898**

VENTX Rabbit Polyclonal Antibody

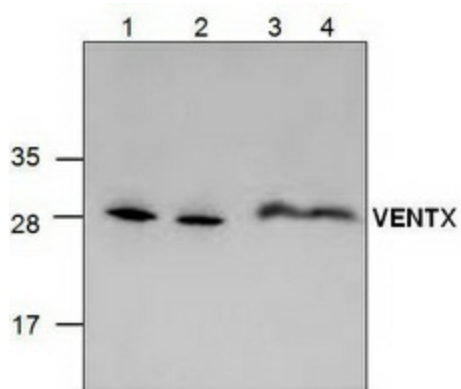
Product data:

Product Type:	Primary Antibodies
Applications:	WB
Recommended Dilution:	WB: 0.5-4ug/ml
Reactivity:	Human, Mouse, Rat, Xenopus
Host:	Rabbit
Isotype:	IgG
Clonality:	Polyclonal
Immunogen:	Synthetic peptide surrounding amino acid 76 of human VENTX
Formulation:	100 µg (0.5 mg/ml) affinity purified rabbit anti-VENTX polyclonal antibody in phosphate buffered saline (PBS), pH 7.2, containing 30% glycerol, 0.5% BSA, 5 mM EDTA and 0.01% thimerosal.
Concentration:	lot specific
Purification:	Affinity purified
Conjugation:	Unconjugated
Storage:	Store at -20°C as received.
Stability:	Stable for 12 months from date of receipt.
Gene Name:	VENT homeobox
Database Link:	NP_055283 Entrez Gene 27287 Human O95231
Background:	VENTX is a member of the Vent family of homeodomain proteins. VENTX may function as a transcriptional repressor and involved in mesodermal patterning and hemapoietic stem cell maintenance.
Synonyms:	HPX42B; NA88A; VENTX2
Protein Families:	Transcription Factors



[View online »](#)

Product images:



Western blot analysis of VENTX using Jurkat cell lysate (Lane 1 & 2), 3T3 mouse lysate (Lane 3) and rat kidney tissue lysate (Lane 4).