

Product datasheet for **TA318897**

MBD1 Rabbit Polyclonal Antibody

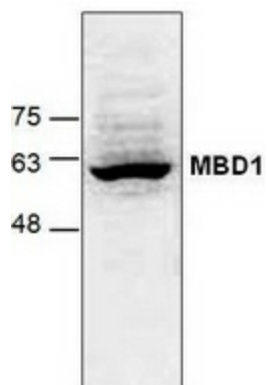
Product data:

Product Type:	Primary Antibodies
Applications:	WB
Recommended Dilution:	WB: 0.5-4ug/ml
Reactivity:	Human, Mouse
Host:	Rabbit
Isotype:	IgG
Clonality:	Polyclonal
Immunogen:	Synthetic peptide surrounding amino acid 594 of human MBD1
Formulation:	100 µg (0.5 mg/ml) affinity purified rabbit anti- MBD1 polyclonal antibody in phosphate buffered saline (PBS), pH 7.2, containing 30% glycerol, 0.5% BSA, 5 mM EDTA and 0.01% thimerosal.
Concentration:	lot specific
Purification:	Affinity purified
Conjugation:	Unconjugated
Storage:	Store at -20°C as received.
Stability:	Stable for 12 months from date of receipt.
Gene Name:	methyl-CpG binding domain protein 1
Database Link:	NP_056723 Entrez Gene 17190 Mouse Entrez Gene 4152 Human Q9UIS9
Background:	The MBD family of proteins includes MeCP2, MBD1, MBD2, MBD3 and MBD4. MBD1 (methyl-CpG binding domain protein 1) binds to methylated CpG sites and represses gene transcription. MBD1 is recruited to both methylated and non-methylated CpGs by separate domains: the CXXC domain targets the protein to non-methylated CpGs whereas the MBD domain targets the protein to methylated CpG. MBD1 may also interact with histone methyltransferase SETDB1 to repress transcription.
Synonyms:	CXXC3; PCM1; RFT
Protein Families:	Druggable Genome, Transcription Factors



[View online »](#)

Product images:



Western blot analysis of MBD1 using Jurkat cell lysate.