

## Product datasheet for **TA318894**

### TCTN2 Rabbit Polyclonal Antibody

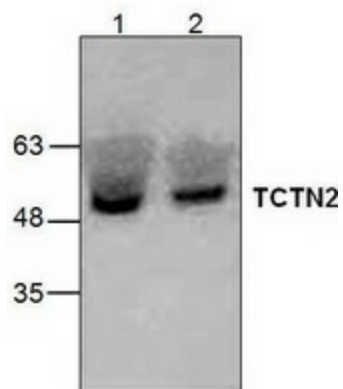
#### Product data:

Product Type:	Primary Antibodies
Applications:	WB
Recommended Dilution:	WB: 0.5-4ug/ml
Reactivity:	Human, Mouse, Rat
Host:	Rabbit
Isotype:	IgG
Clonality:	Polyclonal
Immunogen:	Synthetic peptide surrounding amino acid 435 of rat TCTN2
Formulation:	100 µg (0.5 mg/ml) affinity purified rabbit anti- TCTN2 polyclonal antibody in phosphate buffered saline (PBS), pH 7.2, containing 30% glycerol, 0.5% BSA, 5 mM EDTA and 0.01% thimerosal.
Concentration:	lot specific
Purification:	Affinity purified
Conjugation:	Unconjugated
Storage:	Store at -20°C as received.
Stability:	Stable for 12 months from date of receipt.
Gene Name:	tectonic family member 2
Database Link:	<a href="#">NP_001137322</a> <a href="#">Entrez Gene 67978 Mouse</a> <a href="#">Entrez Gene 689779 Rat</a> <a href="#">Entrez Gene 79867 Human</a> <a href="#">Q96GX1</a>
Background:	TCTN2 is a member of the Tectonic protein family. Tectonic proteins are transmembrane proteins that regulate the Hedgehog (Hh)-signaling pathway. Defects in TCTN2 can lead to Meckel syndrome type 8. This disorder is characterized by a combination of renal cysts and variable associated features which includes developmental anomalies of the central nervous system, hepatic ductal dysplasia and cysts, and polydactyly.
Synonyms:	C12orf38; JBTS24; MKS8; TECT2



[View online »](#)

## Product images:



Western blot analysis of TCTN2 using Jurkat cell lysate (Lane 1) and 3T3 cell lysate (Lane 2).