

Product datasheet for **TA318893**

PARD3 Rabbit Polyclonal Antibody

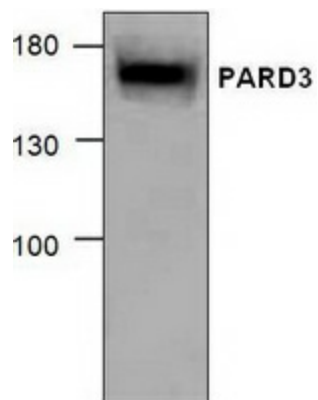
Product data:

Product Type:	Primary Antibodies
Applications:	WB
Recommended Dilution:	WB: 1-4 ug/ml
Reactivity:	Human, Mouse, Rat
Host:	Rabbit
Isotype:	IgG
Clonality:	Polyclonal
Immunogen:	Synthetic peptide surrounding amino acid 1320 mouse PARD3
Formulation:	100 µg (0.5 mg/ml) affinity purified rabbit anti-PARD3 polyclonal antibody in phosphate buffered saline (PBS), pH 7.2, containing 30% glycerol, 0.5% BSA, 5 mM EDTA and 0.01% thimerosal.
Concentration:	lot specific
Purification:	Affinity purified
Conjugation:	Unconjugated
Storage:	Store at -20°C as received.
Stability:	Stable for 12 months from date of receipt.
Gene Name:	par-3 family cell polarity regulator
Database Link:	NP_001171714 Entrez Gene 81918 Rat Entrez Gene 93742 Mouse Entrez Gene 56288 Human Q8TEW0
Background:	PARD (partitioning-defective) proteins are important in asymmetric cell division and polarized growth. PARD3 plays a vital role in the formation of epithelial tight junctions. The PARD6-PARD3 complex links GTP-bound Rho small GTPases to atypical protein kinase C proteins.
Synonyms:	ASIP; Baz; PAR3; PAR3alpha; PARD-3; PARD3A; PPP1R118; SE2-5L16; SE2-5LT1; SE2-5T2
Protein Pathways:	Adherens junction, Chemokine signaling pathway, Endocytosis, Neuroactive ligand-receptor interaction, Tight junction



[View online »](#)

Product images:



Western blot analysis of PAR3 using 3T3 cell lysate.