

## Product datasheet for **TA318892**

### ERAB (HSD17B10) Rabbit Polyclonal Antibody

#### Product data:

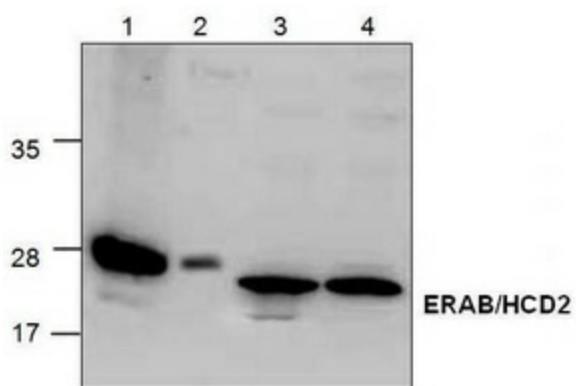
Product Type:	Primary Antibodies
Applications:	WB
Recommended Dilution:	WB: 1-4 ug/ml
Reactivity:	Human, Mouse, Rat
Host:	Rabbit
Isotype:	IgG
Clonality:	Polyclonal
Immunogen:	Synthetic peptide surrounding amino acid 250 of rat ERAB/HCD2
Formulation:	100 µg (0.5 mg/ml) affinity purified rabbit anti-ERAB/HCD2 polyclonal antibody in phosphate buffered saline (PBS), pH 7.2, containing 30% glycerol, 0.5% BSA, 5 mM EDTA and 0.01% thimerosal.
Concentration:	lot specific
Purification:	Affinity purified
Conjugation:	Unconjugated
Storage:	Store at -20°C as received.
Stability:	Stable for 12 months from date of receipt.
Gene Name:	hydroxysteroid (17-beta) dehydrogenase 10
Database Link:	<a href="#">NP_004484</a> <a href="#">Entrez Gene 15108 Mouse</a> <a href="#">Entrez Gene 63864 Rat</a> <a href="#">Entrez Gene 3028 Human</a> <a href="#">Q99714</a>
Background:	ERAB/HCD2 (Hydroxyacyl-Coenzyme A dehydrogenase) is a mitochondrial protein that catalyzes the oxidation of straight-chain 3-hydroxyacyl-CoAs as part of the beta-oxidation pathway. ERAB is characterized as a NAD <sup>+</sup> -dependent dehydrogenase that overexpressed in neurons affected with Alzheimer's disease.
Synonyms:	17b-HSD10; ABAD; CAMR; DUPXp11.22; ERAB; HADH2; HCD2; MHBD; MRPP2; MRX17; MRX31; MRXS10; SCHAD
Protein Families:	Druggable Genome



[View online »](#)

Protein Pathways: Alzheimer's disease, Metabolic pathways, Valine, leucine and isoleucine degradation

**Product images:**



Western blot analysis of ERAB/HCD2 using rat kidney tissue lysate (Lane 1), mouse 3T3 cell lysate (Lane 2) and Jurkat cell lysate (Lane 3 & 4).