

Product datasheet for **TA318890**

G protein alpha 16 (GNA15) Rabbit Polyclonal Antibody

Product data:

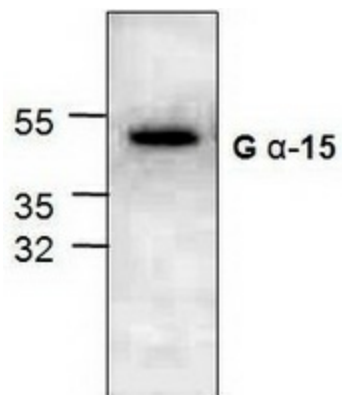
Product Type:	Primary Antibodies
Applications:	WB
Recommended Dilution:	WB: 0.5-4ug/ml, IHC: 5-20ug/ml
Reactivity:	Human, Mouse, Rat
Host:	Rabbit
Isotype:	IgG
Clonality:	Polyclonal
Immunogen:	Synthetic peptide surrounding amino acid 356of human G 15
Formulation:	100 µg (0.5 mg/ml) affinity purified rabbit anti-Ga15 polyclonal antibody in PBS (pH 7.2) containing 30% glycerol, 0.5% BSA, 0.01% thimerosal.
Concentration:	lot specific
Purification:	Affinity purified
Conjugation:	Unconjugated
Storage:	Store at -20°C as received.
Stability:	Stable for 12 months from date of receipt.
Gene Name:	G protein subunit alpha 15
Database Link:	NP_002059 Entrez Gene 14676 Mouse Entrez Gene 89788 Rat Entrez Gene 2769 Human P30679
Background:	Ga16 is the only heterotrimeric G protein with a restricted expression pattern in hematopoietic cells. Differentiation of promyelocytic cells leads to decreased expression of Ga16. The G protein is known to couple a large number of G protein-coupled receptors to PLC-β and can lead to production of the secondary messengers diacylglycerol and inositol phosphates. Targeted deletion of Ga15, a mouse orthologue of human Ga16, causes reduced C5a receptor signaling. Ga16 serves as a marker, in addition to CD34, for hematopoietic progenitor cells.
Synonyms:	GNA16
Protein Families:	Druggable Genome



[View online »](#)

Protein Pathways: Calcium signaling pathway

Product images:



Western blot analysis of G alpha-15 expression in 3T3 cell lysate.