

Product datasheet for **TA318889**

G protein alpha Inhibitor 2 (GNAI2) Rabbit Polyclonal Antibody

Product data:

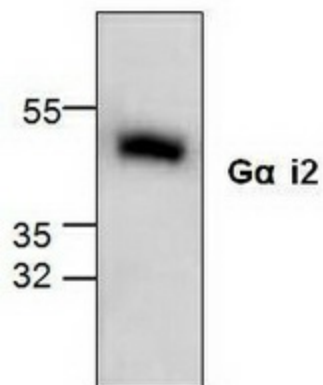
Product Type:	Primary Antibodies
Applications:	WB
Recommended Dilution:	WB: 0.5-4ug/ml, IP: 10-20ug/ml
Reactivity:	Human
Host:	Rabbit
Isotype:	IgG
Clonality:	Polyclonal
Immunogen:	Synthetic peptide surrounding amino acid 229 of human Gai2
Formulation:	100 µg (0.5 mg/ml) affinity-purified rabbit anti-Gai2 polyclonal antibody in phosphate buffered saline (PBS), pH 7.2, containing 30% glycerol, 0.5% BSA, 0.01% thimerosal.
Concentration:	lot specific
Purification:	Affinity purified
Conjugation:	Unconjugated
Storage:	Store at -20°C as received.
Stability:	Stable for 12 months from date of receipt.
Gene Name:	G protein subunit alpha i2
Database Link:	NP_002061 Entrez Gene 2771 Human P04899
Background:	Gai2 is a 40-41 kDa alpha-subunit of heterotrimeric protein that shares sequence homology with Gai3 and Gai1. All these G proteins can be ADP-ribosylated at the carboxy terminal Cys of the CAAX sequence, interfering with receptor coupling. Gai2 is expressed widely in tissues and cell lines. Activation of PLC-β by Gai-coupled receptors is the result of release of Gβγ subunits from Gai. Gai2 regulates potassium channel activation. Mutation at Arg179 has been identified in tumors. This and the Q205L mutant inhibit adenylyl cyclase.
Synonyms:	GIP; GNAI2B; H_LUCA15.1; H_LUCA16.1
Protein Families:	Druggable Genome



[View online »](#)

Protein Pathways:

Axon guidance, Chemokine signaling pathway, Gap junction, Leukocyte transendothelial migration, Long-term depression, Melanogenesis, Progesterone-mediated oocyte maturation, Tight junction

Product images:

Western blot analysis of G alpha i2 expression in 3T3 cell lysate.