

Product datasheet for **TA318887**

EZH2 Rabbit Polyclonal Antibody

Product data:

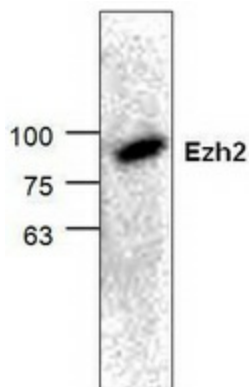
Product Type:	Primary Antibodies
Applications:	WB
Recommended Dilution:	WB: 0.5-4ug/ml
Reactivity:	Human, Mouse, Rat
Host:	Rabbit
Isotype:	IgG
Clonality:	Polyclonal
Immunogen:	Synthetic peptide mapping to the N-terminus of rat Ezh2
Formulation:	100 µg (0.5 mg/ml) affinity purified rabbit anti- EZH2 polyclonal antibody in phosphate buffered saline (PBS), pH 7.2, containing 30% glycerol, 0.5% BSA, 5 mM EDTA and 0.01% thimerosal.
Concentration:	lot specific
Purification:	Affinity purified
Conjugation:	Unconjugated
Storage:	Store at -20°C as received.
Stability:	Stable for 12 months from date of receipt.
Gene Name:	enhancer of zeste 2 polycomb repressive complex 2 subunit
Database Link:	NP_001190176 Entrez Gene 14056 Mouse Entrez Gene 312299 Rat Entrez Gene 2146 Human Q15910
Background:	Enhancer of zeste homolog 2 (Ezh2) is a member of the Polycomb group (PcG). The PcG proteins are involved in maintaining the silenced state of several developmentally regulated genes and contribute to the maintenance of cell identity, cell cycle regulation, and oncogenesis. Enhancer of zeste homolog 2 (Ezh2) contains four conserved regions including domain I, domain II, and a cysteine-rich amino acid stretch that precedes the carboxy-terminal SET domain. Ezh2 also plays a role as primary effector and as a mediator of tumorigenesis.
Synonyms:	ENX-1; ENX1; EZH1; EZH2b; KMT6; KMT6A; WVS; WVS2



[View online »](#)

Protein Families: Druggable Genome, Transcription Factors

Product images:



Western blot analysis of Ezh2 using rat kidney tissue lysate.