

## Product datasheet for **TA318885**

### ACADVL Rabbit Polyclonal Antibody

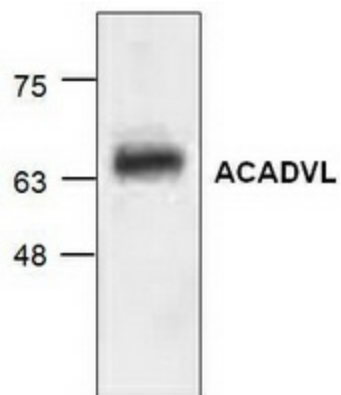
#### Product data:

Product Type:	Primary Antibodies
Applications:	WB
Recommended Dilution:	WB: 1-4 ug/ml
Reactivity:	Human, Mouse, Rat
Host:	Rabbit
Isotype:	IgG
Clonality:	Polyclonal
Immunogen:	Synthetic peptide surrounding amino acid 441 of rat ACADVL
Formulation:	100 µg (0.5 mg/ml) affinity purified rabbit anti-ACADVL polyclonal antibody in phosphate buffered saline (PBS), pH 7.2, containing 30% glycerol, 0.5% BSA, 5 mM EDTA and 0.01% thimerosal.
Concentration:	lot specific
Purification:	Affinity purified
Conjugation:	Unconjugated
Storage:	Store at -20°C as received.
Stability:	Stable for 12 months from date of receipt.
Gene Name:	acyl-CoA dehydrogenase, very long chain
Database Link:	<a href="#">NP_000009</a> <a href="#">Entrez Gene 11370 Mouse</a> <a href="#">Entrez Gene 25363 Rat</a> <a href="#">Entrez Gene 37 Human</a> <a href="#">P49748</a>
Background:	Acyl-CoA dehydrogenase, very long chain (ACADVL) is a member of the acyl-CoA dehydrogenases family. ACADVL is an inner mitochondrial membrane protein that catalyzes the first step of the mitochondrial fatty acid beta-oxidation pathway. A deficiency of ACADVL reduces myocardial fatty acid beta-oxidation and is associated with cardiomyopathy.
Synonyms:	ACAD6; LCACD; VLCAD
Protein Families:	Druggable Genome
Protein Pathways:	Fatty acid metabolism, Metabolic pathways



[View online »](#)

## Product images:



Western blot analysis of ACADVL with rat kidney tissue lysate.