

Product datasheet for **TA318882**

SALL1 Rabbit Polyclonal Antibody

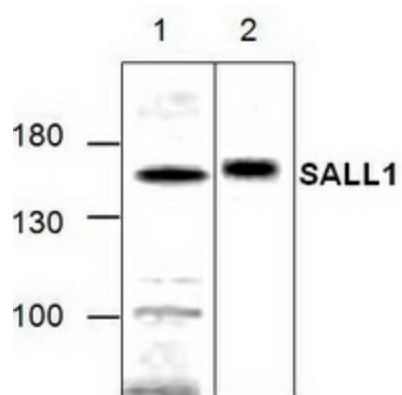
Product data:

Product Type:	Primary Antibodies
Applications:	WB
Recommended Dilution:	WB: 1-4 ug/ml
Reactivity:	Human, Mouse, Rat
Host:	Rabbit
Isotype:	IgG
Clonality:	Polyclonal
Immunogen:	Synthetic peptide surrounding amino acid 728 of rat SALL1
Formulation:	100 µg (0.5 mg/ml) affinity purified rabbit anti-SALL1 polyclonal antibody in phosphate buffered saline (PBS), pH 7.2, containing 30% glycerol, 0.5% BSA, 5 mM EDTA and 0.01% thimerosal.
Concentration:	lot specific
Purification:	Affinity purified
Conjugation:	Unconjugated
Storage:	Store at -20°C as received.
Stability:	Stable for 12 months from date of receipt.
Gene Name:	spalt like transcription factor 1
Database Link:	NP_001121364 Entrez Gene 58198 Mouse Entrez Gene 307740 Rat Entrez Gene 6299 Human Q9NSC2
Background:	Sal-like 1 (SALL1) is a mammalian homolog of the Drosophila region-specific homeotic gene spalt (sal). SALL1 protein encodes a zinc finger-containing transcription regulator that may mediate higher order chromatin structure.
Synonyms:	HEL-S-89; HSAL1; Sal-1; TBS; ZNF794
Protein Families:	Druggable Genome, Transcription Factors



[View online »](#)

Product images:



Western blot analysis of SALL1 with lysates from Jurkat cell (Lane 1) and mouse 3T3 (Lane 2).