

Product datasheet for **TA318881**

MBD2 Rabbit Polyclonal Antibody

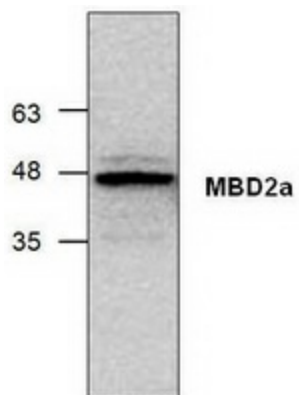
Product data:

Product Type:	Primary Antibodies
Applications:	WB
Recommended Dilution:	WB: 0.5-4ug/ml
Reactivity:	Human, Mouse, Rat
Host:	Rabbit
Isotype:	IgG
Clonality:	Polyclonal
Immunogen:	Synthetic peptide surrounding amino acid 164 of rat MBD2a
Formulation:	100 µg (0.5 mg/ml) affinity purified rabbit anti- MBD2a polyclonal antibody in phosphate buffered saline (PBS), pH 7.2, containing 30% glycerol, 0.5% BSA, 5 mM EDTA and 0.01% thimerosal.
Concentration:	lot specific
Purification:	Affinity purified
Conjugation:	Unconjugated
Storage:	Store at -20°C as received.
Stability:	Stable for 12 months from date of receipt.
Gene Name:	methyl-CpG binding domain protein 2
Database Link:	NP_003918 Entrez Gene 17191 MouseEntrez Gene 680172 RatEntrez Gene 8932 Human Q9UBB5
Background:	The MBD family of proteins includes MeCP2, MBD1, MBD2, MBD3 and MBD4. MBD2 is highly similar to MBD3 but only MBD2 targets the MeCP1 complex to methylate DNA. MBD2 has two isoforms, MBD2a and MBD2b. MBD2a is a 414 amino acids protein, whereas MBD2b lacks the 152 amino acids N-terminal extension. MBD2a interacts with RNA helicase A to enhance CREB-dependent gene expression.
Synonyms:	DMTase; NY-CO-41
Protein Families:	Druggable Genome, Stem cell - Pluripotency, Transcription Factors



[View online »](#)

Product images:



Western blot analysis of MBD2a using Jurkat cell lysate.