

Product datasheet for **TA318880**

SLAMF1 Rabbit Polyclonal Antibody

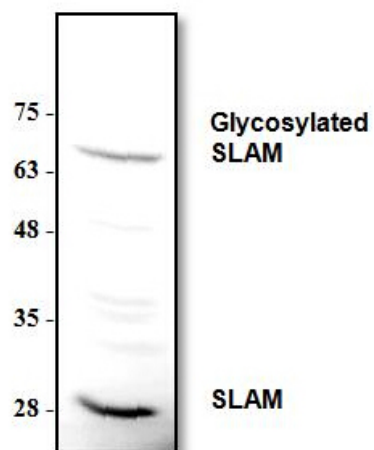
Product data:

Product Type:	Primary Antibodies
Applications:	WB
Recommended Dilution:	WB: 3-6 ug/ml
Reactivity:	Human, Rat
Host:	Rabbit
Isotype:	Ig
Clonality:	Polyclonal
Immunogen:	Amino acids corresponding to 138-153 of human SLAM
Formulation:	200 mg (0.5 mg/ml) purified rabbit polyclonal antibody in phosphate-buffered saline (PBS) containing 30% glycerol, 0.5% BSA, and 0.01% thimerosal.
Concentration:	lot specific
Purification:	Affinity purified
Conjugation:	Unconjugated
Storage:	Store at -20°C as received.
Stability:	Stable for 12 months from date of receipt.
Gene Name:	signaling lymphocytic activation molecule family member 1
Database Link:	NP_003028 Entrez Gene 498286 Rat Entrez Gene 6504 Human Q13291
Background:	Signaling lymphocytic activation molecule (SLAM/CD150) is expressed at hematopoietic tissue, such as memory T-cells, as well as at immature thymocytes. It has high-affinity self-ligand ability and plays an important role in interaction of T and B cells.
Synonyms:	CD150; CDw150; SLAM
Protein Families:	Druggable Genome, ES Cell Differentiation/IPS, Transmembrane



[View online »](#)

Product images:



Western blot analysis of SLAM/CD150 using Jurkat cell lysate.