

Product datasheet for **TA318877**

Cathepsin L (CTSL) Rabbit Polyclonal Antibody

Product data:

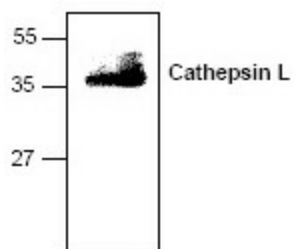
Product Type:	Primary Antibodies
Applications:	WB
Recommended Dilution:	WB: 0.5-4ug/ml
Reactivity:	Human
Host:	Rabbit
Isotype:	IgG
Clonality:	Polyclonal
Immunogen:	Synthetic peptide surrounding amino acid 223 of human Cathepsin L
Formulation:	100 µg (0.2 mg/ml) affinity purified rabbit anti-cathepsin L polyclonal antibody in phosphate buffered saline (PBS), pH 7.2, containing 30% glycerol, 0.1% BSA, 0.01% thimerosal.
Concentration:	lot specific
Purification:	Affinity purified
Conjugation:	Unconjugated
Storage:	Store at -20°C as received.
Stability:	Stable for 12 months from date of receipt.
Gene Name:	cathepsin L
Database Link:	NP_666023 Entrez Gene 1514 Human P07711
Background:	Cathepsin L is a normal lysosomal cysteine endoproteases that is expressed in all cells. The latent 39 kDa pro-Cathepsin L must be processed by cleavage of the 96 amino acid pro-peptide, to generate the active two-chain form made up of 21 and 5 kDa subunits. Mature Cathepsin L is normally localized in the lysosomes where it plays a major role in intracellular protein catabolism. The fact that Cathepsin L is also capable of degrading extracellular matrix proteins suggests that it may play a role in invasion and metastasis and could be a useful prognostic indicator for cancer.
Synonyms:	CATL; CTSL1; MEP
Protein Families:	Druggable Genome, Protease



[View online »](#)

Protein Pathways: Antigen processing and presentation, Lysosome

Product images:



Western blot analysis of Cathepsin L expression with Jurkat cell lysate.