

## Product datasheet for **TA318876**

### Calpain 1 (CAPN1) Rabbit Polyclonal Antibody

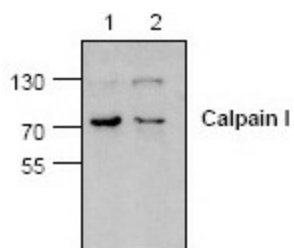
#### Product data:

Product Type:	Primary Antibodies
Applications:	WB
Recommended Dilution:	WB: 0.5-4ug/ml
Reactivity:	Human, Mouse, Rat, Bovine, Pig, Rabbit
Host:	Rabbit
Isotype:	IgG
Clonality:	Polyclonal
Immunogen:	Synthetic peptide surrounding amino acid 700 of rat Calpain 1
Formulation:	100 µg (0.5 mg/ml) affinity purified rabbit anti-calpain I (large subunit) antibody in phosphate-buffered saline (PBS) containing 30% glycerol, 0.5% BSA, and 0.01% thimerosal.
Concentration:	lot specific
Purification:	Affinity purified
Conjugation:	Unconjugated
Storage:	Store at -20°C as received.
Stability:	Stable for 12 months from date of receipt.
Gene Name:	calpain 1
Database Link:	<a href="#">NP_001185797</a> <a href="#">Entrez Gene 12333 Mouse</a> <a href="#">Entrez Gene 29153 Rat</a> <a href="#">Entrez Gene 823 Human</a> <a href="#">P07384</a>
Background:	Calpains are cytosolic, calcium-dependent, cysteine proteases that are ubiquitously expressed in mammalian and avian tissues. Type I calpain requires micromolar amounts of calcium, while type II calpain requires millimolar amounts of calcium. The anti-calpain I antibody recognizes the large subunit (80 kDa) of human Calpain I. It does not recognize the smaller subunit of human Calpain I.
Synonyms:	CANP; CANP1; CANPL1; muCANP; muCL; SPG76
Protein Families:	Druggable Genome, Protease
Protein Pathways:	Alzheimer's disease, Apoptosis



[View online »](#)

## Product images:



Western blot analysis of Calpain 1 expression in lysate from Jurkat cells treated with (Lane 2) or without (Lane 1) camptothecin.