

Product datasheet for **TA318873**

ACADL Rabbit Polyclonal Antibody

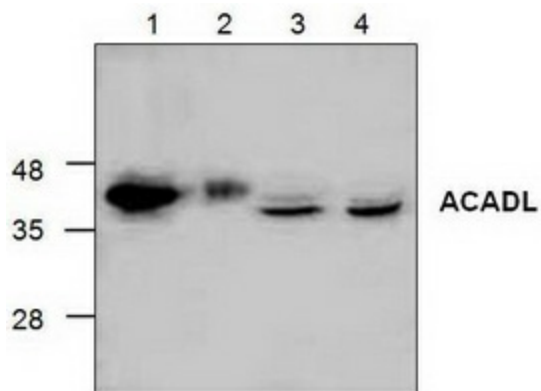
Product data:

Product Type:	Primary Antibodies
Applications:	WB
Recommended Dilution:	WB: 1-4 ug/ml
Reactivity:	Human, Mouse, Rat
Host:	Rabbit
Isotype:	IgG
Clonality:	Polyclonal
Immunogen:	Synthetic peptide surrounding amino acid 38 of human ACADL
Formulation:	100 µg (0.5 mg/ml) affinity purified rabbit anti-ACADL polyclonal antibody in phosphate buffered saline (PBS), pH 7.2, containing 30% glycerol, 0.5% BSA, 5 mM EDTA and 0.01% thimerosal.
Concentration:	lot specific
Purification:	Affinity purified
Conjugation:	Unconjugated
Storage:	Store at -20°C as received.
Stability:	Stable for 12 months from date of receipt.
Gene Name:	acyl-CoA dehydrogenase, long chain
Database Link:	NP_001599 Entrez Gene 11363 Mouse Entrez Gene 25287 Rat Entrez Gene 33 Human P28330
Background:	ACADL belongs to the acyl-CoA dehydrogenase family, which is a family of mitochondrial flavoenzymes. This protein is involved in fatty acid and branched chain amino acid metabolism. ACADL catalyzes the initial step of mitochondria beta-oxidation of straight-chain fatty acid.
Synonyms:	ACAD4; LCAD
Protein Families:	Druggable Genome
Protein Pathways:	Fatty acid metabolism, Metabolic pathways, PPAR signaling pathway



[View online »](#)

Product images:



Western blot analysis of ACADL with rat kidney tissue lysate (Lane 1), mouse 3T3 cell lysate (Lane 2) and Jurkat cell lysate (Lane 3 & 4).