

## Product datasheet for **TA318866**

### CDC42 Rabbit Polyclonal Antibody

#### Product data:

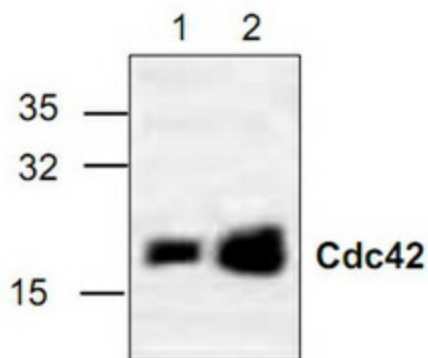
Product Type:	Primary Antibodies
Applications:	WB
Recommended Dilution:	WB: 0.5-4ug/ml, IHC: 10-20ug/ml
Reactivity:	Human, Mouse, Rat, Bovine
Host:	Rabbit
Isotype:	IgG
Clonality:	Polyclonal
Immunogen:	Synthetic peptides surrounding amino acid 144 of human cdc42
Formulation:	100 µg (0.2 mg/ml) affinity purified rabbit anti-cdc42 polyclonal antibody in phosphate buffered saline (PBS), pH 7.2, containing 30% glycerol, 0.5% BSA, 0.01% thimerosal.
Concentration:	lot specific
Purification:	Affinity purified
Conjugation:	Unconjugated
Storage:	Store at -20°C as received.
Stability:	Stable for 12 months from date of receipt.
Gene Name:	cell division cycle 42
Database Link:	<a href="#">NP_426359</a> <a href="#">Entrez Gene 12540 Mouse</a> <a href="#">Entrez Gene 64465 Rat</a> <a href="#">Entrez Gene 998 Human</a> <a href="#">P60953</a>
Background:	cdc42/Rac belongs to the superfamily of small GTPases that are structurally linked to the proto-oncogene product p21ras and are important for the control of cell growth and differentiation as well as for intracellular organization. Cdc42/Rac is an important upstream regulator of the protein kinase cascade that controls the SAPK/JNK and p38 activity. Recent data also suggest that constitutive active forms of cdc42 can induce apoptosis through a mechanism requiring signaling through SAPK/JNK.
Synonyms:	CDC42Hs; G25K
Protein Families:	Druggable Genome



[View online »](#)

**Protein Pathways:**

Adherens junction, Axon guidance, Chemokine signaling pathway, Endocytosis, Epithelial cell signaling in Helicobacter pylori infection, Fc gamma R-mediated phagocytosis, Focal adhesion, GnRH signaling pathway, Leukocyte transendothelial migration, MAPK signaling pathway, Neurotrophin signaling pathway, Pancreatic cancer, Pathogenic Escherichia coli infection, Pathways in cancer, Regulation of actin cytoskeleton, Renal cell carcinoma, T cell receptor signaling pathway, Tight junction, VEGF signaling pathway

**Product images:**

Western blot analysis of cdc42 in 3T3 (Lane 1) and Jurkat (Lane 2) cell lysate.