

Product datasheet for **TA318864**

CD40 Rabbit Polyclonal Antibody

Product data:

| | |
|-----------------------|---|
| Product Type: | Primary Antibodies |
| Applications: | WB |
| Recommended Dilution: | WB: 0.5-4ug/ml |
| Reactivity: | Human, Mouse, Rat, Monkey, Pig |
| Host: | Rabbit |
| Isotype: | IgG |
| Clonality: | Polyclonal |
| Immunogen: | Synthetic peptide corresponding to residues surrounding amino acids 261 of human CD40 |
| Formulation: | 100 µg (0.2 mg/ml) immunoaffinity purified rabbit anti-CD40 polyclonal antibody in phosphate buffered saline (PBS), pH 7.2, containing 30% glycerol, 0.5% BSA, 0.01% thimerosal. |
| Concentration: | lot specific |
| Purification: | Affinity purified |
| Conjugation: | Unconjugated |
| Storage: | Store at -20°C as received. |
| Stability: | Stable for 12 months from date of receipt. |
| Gene Name: | CD40 molecule |
| Database Link: | NP_690593 Entrez Gene 21939 Mouse Entrez Gene 171369 Rat Entrez Gene 707749 Monkey Entrez Gene 958 Human P25942 |



[View online »](#)

Background:

CD40 is a type I membrane protein found on the surface of B cells and primary carcinomas. It belongs to the TNF-R family. CD40 serves as the receptor for CD40 ligand (CD40L), a cytokine expressed on the cell surface of T cells. CD40 plays a critical role in B cell proliferation, antibody class switching, modulation of apoptosis in the germinal center through interaction with T cells expressing CD40L, and activation of CD4+ T cells. In non-hemopoietic cells such as epidermal basal cells, CD40 ligation serves as the signal for inhibition of cell growth and induction of differentiation. The cytoplasmic domain of CD40 interacts with TRAF6, a TNFR associated factor homolog that mediates signaling from CD40. Ligation of CD40 with its ligand preferentially induces stress-activated protein kinases in B lymphocytes.

Synonyms:

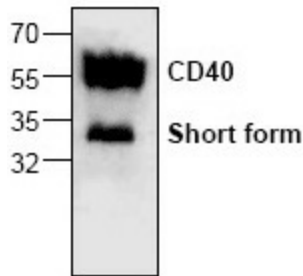
Bp50; CDW40; p50; TNFRSF5

Protein Families:

Druggable Genome, Secreted Protein, Transmembrane

Protein Pathways:

Allograft rejection, Asthma, Autoimmune thyroid disease, Cell adhesion molecules (CAMs), Cytokine-cytokine receptor interaction, Primary immunodeficiency, Systemic lupus erythematosus, Toll-like receptor signaling pathway, Viral myocarditis

Product images:

Western blot analysis of CD40 expression in rat kidney tissue lysate.