

## Product datasheet for **TA318860**

### Cytochrome C (CYCS) Rabbit Polyclonal Antibody

#### Product data:

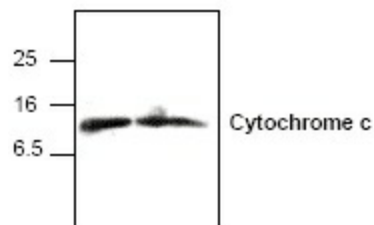
Product Type:	Primary Antibodies
Applications:	WB
Recommended Dilution:	WB: 0.5-4ug/ml, IP: 10-20ug/ml
Reactivity:	Human, Mouse, Rat, Bovine, Chicken, Dog
Host:	Rabbit
Isotype:	IgG
Clonality:	Polyclonal
Immunogen:	Synthetic peptide corresponding to residues surrounding amino acid 70 of rat cytochrome c
Formulation:	100 µg (0.2 mg/ml) affinity purified rabbit anti-Cytochrome c polyclonal antibody in phosphate buffered saline (PBS), pH 7.2, containing 30% glycerol, 0.5% BSA, 0.01% thimerosal.
Concentration:	lot specific
Purification:	Affinity purified
Conjugation:	Unconjugated
Storage:	Store at -20°C as received.
Stability:	Stable for 12 months from date of receipt.
Gene Name:	cytochrome c, somatic
Database Link:	<a href="#">NP_061820</a> <a href="#">Entrez Gene 13063 MouseEntrez Gene 25309 RatEntrez Gene 475258 DogEntrez Gene 54205 Human P99999</a>
Background:	Cytochrome c (m.w. 12,500) is an electron transport protein from mitochondria. It is released from mitochondria to cytoplasm during the early stages of apoptosis, prior to caspase activation, DNA fragmentation, and loss of membrane potential. The cytoplasmic cytochrome c is associated with Apaf-1 and caspase-9 to activate caspase-3 and other caspases
Synonyms:	CYC; HCS; THC4
Protein Families:	Druggable Genome



[View online »](#)

**Protein Pathways:**

Alzheimer's disease, Amyotrophic lateral sclerosis (ALS), Apoptosis, Colorectal cancer, Huntington's disease, p53 signaling pathway, Parkinson's disease, Pathways in cancer, Small cell lung cancer, Viral myocarditis

**Product images:**

Western blot analysis of cytochrome c in Jurkat (left lane) and 3T3 (right lane) cell lysates.