

Product datasheet for **TA318858**

Salivary alpha amylase (AMY1A) Rabbit Polyclonal Antibody

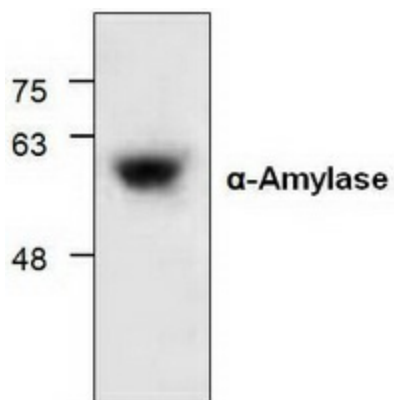
Product data:

Product Type:	Primary Antibodies
Applications:	WB
Recommended Dilution:	WB: 1-4 ug/ml
Reactivity:	Human, Mouse, Rat
Host:	Rabbit
Isotype:	IgG
Clonality:	Polyclonal
Immunogen:	Synthetic peptide surrounding amino acid 492 of human a-Amylase.
Formulation:	100 µg (0.5 mg/ml) affinity purified rabbit anti-alpha-Amylase polyclonal antibody in phosphate buffered saline (PBS), pH 7.2, containing 30% glycerol, 0.5% BSA, 5 mM EDTA and 0.01% thimerosal
Concentration:	lot specific
Purification:	Affinity purified
Conjugation:	Unconjugated
Storage:	Store at -20°C as received.
Stability:	Stable for 12 months from date of receipt.
Gene Name:	amylase, alpha 1A (salivary)
Database Link:	NP_004029 Entrez Gene 24203 Rat Entrez Gene 276 Human P04745
Background:	a-Amylase is an enzyme that is normally produced in the saliva glands and pancreas in humans and in other mammals. a-Amylase catalyzes the cleavage of 1, 4-a-D-glucosidic bonds of large sugar molecules into oligosaccharides and polysaccharides.
Synonyms:	AMY1
Protein Families:	ES Cell Differentiation/IPS, Secreted Protein
Protein Pathways:	Metabolic pathways, Starch and sucrose metabolism



[View online »](#)

Product images:



Western blot analysis of alpha-Amylase with 3T3 cell lysate.