

Product datasheet for **TA318856**

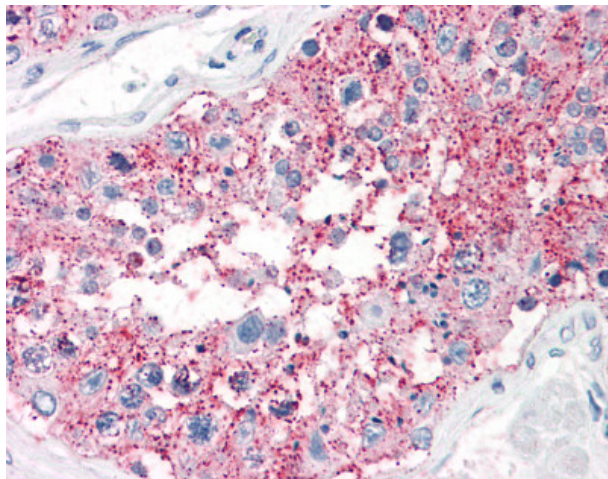
SRPX2 Rabbit Polyclonal Antibody

Product data:

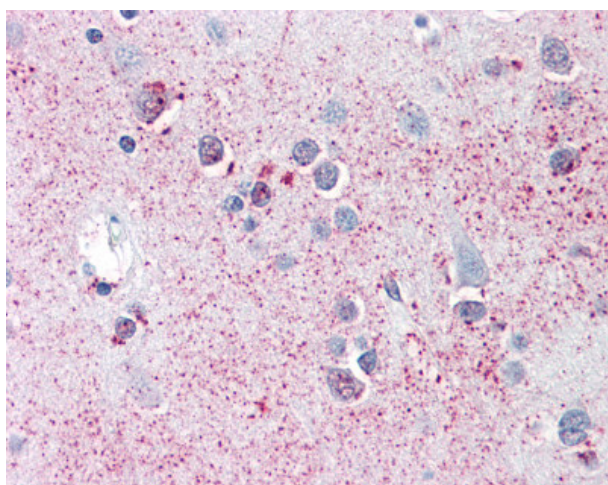
Product Type:	Primary Antibodies
Applications:	IHC
Recommended Dilution:	IHC-P (15 - 20 µg/ml)
Reactivity:	Bat, Chimpanzee, Gorilla, Human, Rabbit, Orang-Utan (Predicted: Monkey, Dog, Horse, Pig)
Host:	Rabbit
Isotype:	IgG
Clonality:	Polyclonal
Immunogen:	SRPX2 antibody was raised against synthetic 13 amino acid peptide from C-Terminus of human SRPX2. Percent identity with other species by BLAST analysis: Human, Chimpanzee, Gorilla, Orangutan, Monkey, Bat, Rabbit (100%); Galago, Marmoset, Elephant, Panda, Dog, Horse, Pig (92%); Bovine (85%).
Formulation:	PBS, 0.1% sodium azide.
Concentration:	lot specific
Purification:	Immunoaffinity Chromatography
Conjugation:	Unconjugated
Storage:	Store at -20°C as received.
Stability:	Stable for 12 months from date of receipt.
Gene Name:	sushi repeat containing protein, X-linked 2
Database Link:	NP_055282 Entrez Gene 492014 Dog Entrez Gene 700756 Monkey Entrez Gene 27286 Human O60687
Synonyms:	BPP; CBPS; PMGX; RESDX; SRPUL
Note:	Specific for Human SRPX2. BLAST analysis of the peptide immunogen showed no homology with other human proteins.
Protein Families:	Druggable Genome, Secreted Protein



[View online »](#)

Product images:

Anti-SRPX2 antibody IHC of human testis. Immunohistochemistry of formalin-fixed, paraffin-embedded tissue after heat-induced antigen retrieval.



Anti-SRPX2 antibody IHC of human brain, cortex. Immunohistochemistry of formalin-fixed, paraffin-embedded tissue after heat-induced antigen retrieval.