

## Product datasheet for **TA318855**

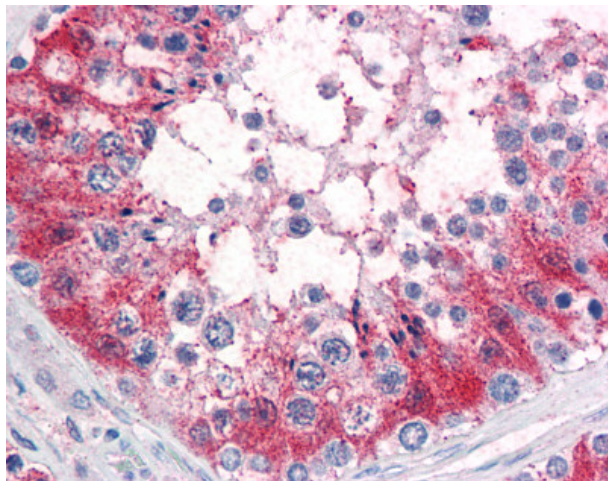
### SRPX2 Rabbit Polyclonal Antibody

#### Product data:

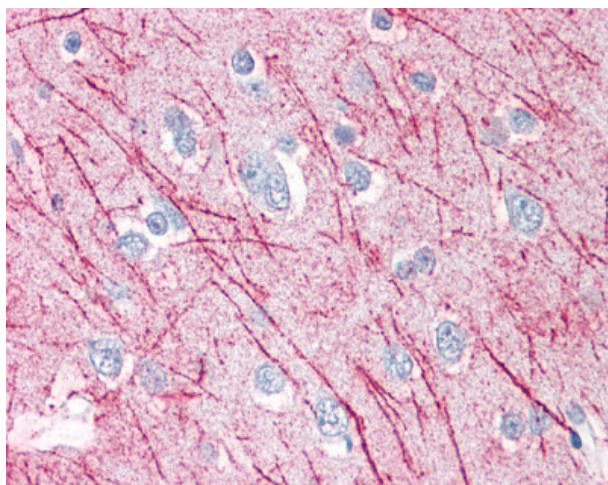
Product Type:	Primary Antibodies
Applications:	IHC
Recommended Dilution:	IHC-P (10 - 15 µg/ml)
Reactivity:	Bat, Bovine, Chimpanzee, Dog, Gorilla, Human, Monkey, Mouse, Pig, Rabbit, Gibbon, Horse, Orang-Utan, Guinea Pig (Predicted: Rat)
Host:	Rabbit
Isotype:	IgG
Clonality:	Polyclonal
Immunogen:	SRPX2 antibody was raised against synthetic 16 amino acid peptide from internal region of human SRPX2. Percent identity with other species by BLAST analysis: Human, Chimpanzee, Gorilla, Orangutan, Gibbon, Monkey, Galago, Marmoset, Mouse, Elephant, Dog, Bat, Bovine, Horse, Rabbit, Pig, Opossum, Guinea pig (100%); Rat, Panda, Platypus (94%); Xenopus (81%).
Formulation:	PBS, 0.1% sodium azide.
Concentration:	lot specific
Purification:	Immunoaffinity Chromatography
Conjugation:	Unconjugated
Storage:	Store at -20°C as received.
Stability:	Stable for 12 months from date of receipt.
Gene Name:	sushi repeat containing protein, X-linked 2
Database Link:	<a href="#">NP_055282</a> <a href="#">Entrez Gene 68792</a> <a href="#">MouseEntrez Gene 317181</a> <a href="#">RatEntrez Gene 492014</a> <a href="#">DogEntrez Gene 700756</a> <a href="#">MonkeyEntrez Gene 27286</a> <a href="#">Human O60687</a>
Synonyms:	BPP; CBPS; PMGX; RESDX; SRPUL
Note:	Specific for Human SRPX2. BLAST analysis of the peptide immunogen showed no homology with other human proteins.
Protein Families:	Druggable Genome, Secreted Protein



[View online »](#)

**Product images:**

Anti-SRPX2 antibody IHC of human testis. Immunohistochemistry of formalin-fixed, paraffin-embedded tissue after heat-induced antigen retrieval.



Anti-SRPX2 antibody IHC of human brain, cortex. Immunohistochemistry of formalin-fixed, paraffin-embedded tissue after heat-induced antigen retrieval.