

Product datasheet for **TA318853**

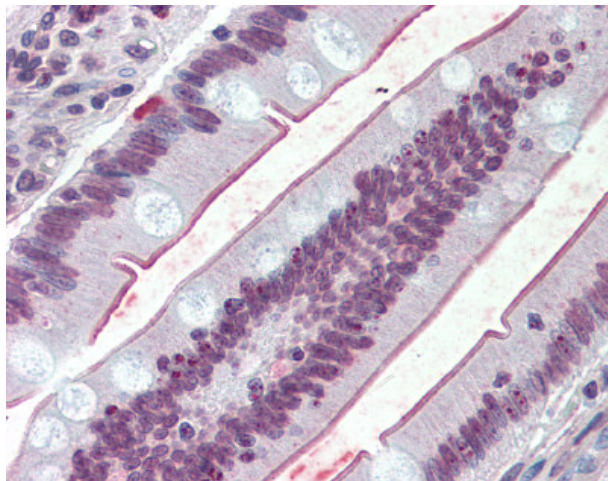
SGLT1 (SLC5A1) Rabbit Polyclonal Antibody

Product data:

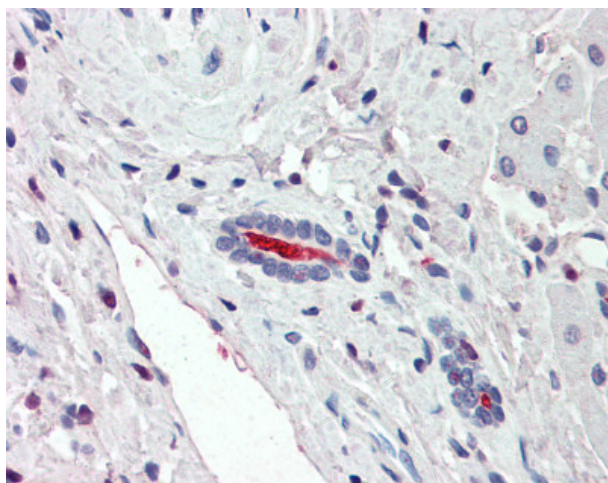
Product Type:	Primary Antibodies
Applications:	IHC
Recommended Dilution:	IHC-P (10 - 15 µg/ml)
Reactivity:	Human (Predicted: Monkey)
Host:	Rabbit
Isotype:	IgG
Clonality:	Polyclonal
Immunogen:	SLC5A1 / SGLT1 antibody was raised against synthetic 16 amino acid peptide from N-Terminus of human SLC5A1 / SGLT1. Percent identity with other species by BLAST analysis: Human (100%); Chimpanzee, Gorilla, Orangutan, Gibbon, Monkey (94%); Baboon (88%).
Formulation:	PBS, 0.1% sodium azide.
Concentration:	lot specific
Purification:	Immunoaffinity Chromatography
Conjugation:	Unconjugated
Storage:	Store at -20°C as received.
Stability:	Stable for 12 months from date of receipt.
Gene Name:	solute carrier family 5 member 1
Database Link:	NP_000334 Entrez Gene 717070 Monkey Entrez Gene 6523 Human P13866
Synonyms:	D22S675; NAGT; SGLT1
Note:	Specific for Human SLC5A1 / SGLT1. BLAST analysis of the peptide immunogen showed no homology with other human proteins.
Protein Families:	Druggable Genome, Transmembrane



[View online »](#)

Product images:

Anti-SLC5A1 / SGLT1 antibody IHC of human small intestine. Immunohistochemistry of formalin-fixed, paraffin-embedded tissue after heat-induced antigen retrieval.



Anti-SLC5A1 / SGLT1 antibody IHC of human liver. Immunohistochemistry of formalin-fixed, paraffin-embedded tissue after heat-induced antigen retrieval.