

Product datasheet for **TA318850**

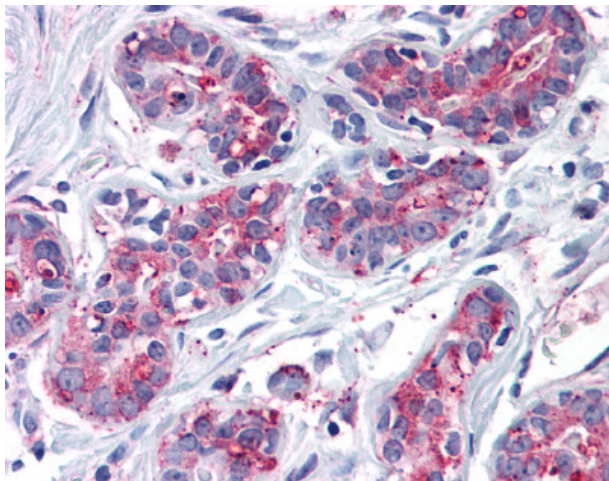
ENTPD2 Rabbit Polyclonal Antibody

Product data:

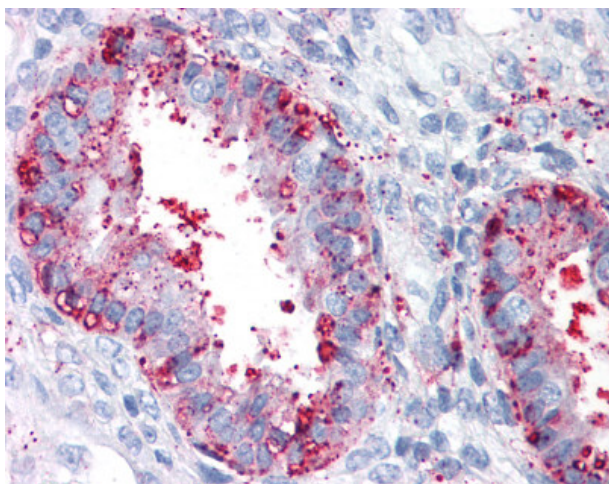
Product Type:	Primary Antibodies
Applications:	IHC
Recommended Dilution:	IHC-P (15 - 20 µg/ml)
Reactivity:	Gorilla, Human (Predicted: Monkey, Dog, Horse)
Host:	Rabbit
Isotype:	IgG
Clonality:	Polyclonal
Immunogen:	ENTPD2 antibody was raised against synthetic 17 amino acid peptide from internal region of human ENTPD2. Percent identity with other species by BLAST analysis: Human, Gorilla (100%); Gibbon, Monkey, Panda, Dog, Horse (94%); Marmoset, Mouse, Rat, Hamster, Elephant, Bovine (88%); Opossum, Xenopus (82%).
Formulation:	PBS, 0.1% sodium azide.
Concentration:	lot specific
Purification:	Immunoaffinity Chromatography
Conjugation:	Unconjugated
Storage:	Store at -20°C as received.
Stability:	Stable for 12 months from date of receipt.
Gene Name:	ectonucleoside triphosphate diphosphohydrolase 2
Database Link:	NP_001237 Entrez Gene 491241 Dog Entrez Gene 721617 Monkey Entrez Gene 954 Human Q9Y5L3
Synonyms:	CD39L1; NTPDase-2
Note:	Specific for Human ENTPD2. BLAST analysis of the peptide immunogen showed no homology with other human proteins, except ENTPD1 (65%).
Protein Families:	Transmembrane
Protein Pathways:	Purine metabolism



[View online »](#)

Product images:

Anti-ENTPD2 antibody IHC of human breast. Immunohistochemistry of formalin-fixed, paraffin-embedded tissue after heat-induced antigen retrieval.



Anti-ENTPD2 antibody IHC of human uterus. Immunohistochemistry of formalin-fixed, paraffin-embedded tissue after heat-induced antigen retrieval.