

Product datasheet for **TA318849**

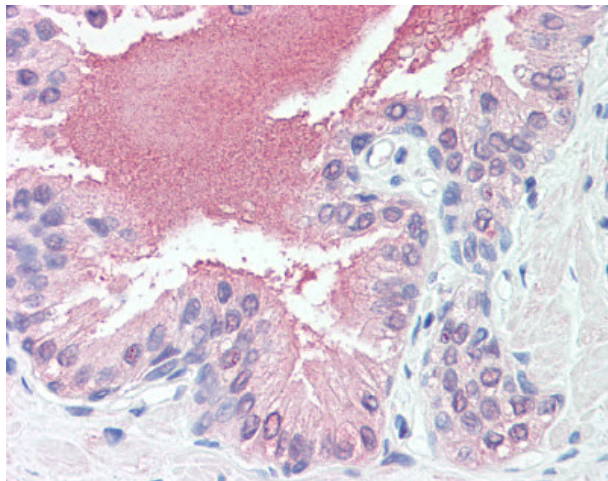
SLITRK6 Rabbit Polyclonal Antibody

Product data:

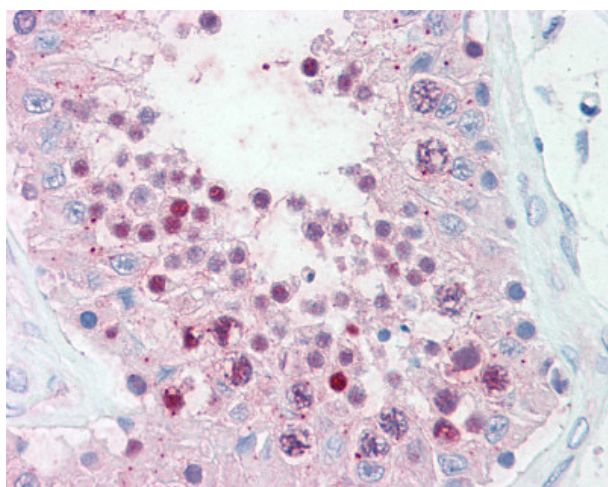
Product Type:	Primary Antibodies
Applications:	IHC
Recommended Dilution:	IHC-P (15 - 20 µg/ml)
Reactivity:	Bovine, Gorilla, Human, Gibbon, Horse (Predicted: Monkey, Bat)
Host:	Rabbit
Isotype:	IgG
Clonality:	Polyclonal
Immunogen:	SLITRK6 antibody was raised against synthetic 17 amino acid peptide from cytoplasmic domain of human SLITRK6. Percent identity with other species by BLAST analysis: Human, Gorilla, Gibbon, Marmoset, Bovine, Horse (100%); Monkey, Bat (94%); Mouse, Elephant, Pig (88%); Rat, Dog, Panda (82%).
Formulation:	PBS, 0.1% sodium azide.
Concentration:	lot specific
Purification:	Immunoaffinity Chromatography
Conjugation:	Unconjugated
Storage:	Store at -20°C as received.
Stability:	Stable for 12 months from date of receipt.
Gene Name:	SLIT and NTRK like family member 6
Database Link:	NP_115605 Entrez Gene 699338 Monkey Entrez Gene 84189 Human Q9H5Y7
Synonyms:	DFNMYP
Note:	Specific for Human SLITRK6. BLAST analysis of the peptide immunogen showed no homology with other human proteins.
Protein Families:	Druggable Genome, Transmembrane



[View online »](#)

Product images:

Anti-SLITRK6 antibody IHC of human prostate. Immunohistochemistry of formalin-fixed, paraffin-embedded tissue after heat-induced antigen retrieval.



Anti-SLITRK6 antibody IHC of human testis. Immunohistochemistry of formalin-fixed, paraffin-embedded tissue after heat-induced antigen retrieval.