

Product datasheet for **TA318846**

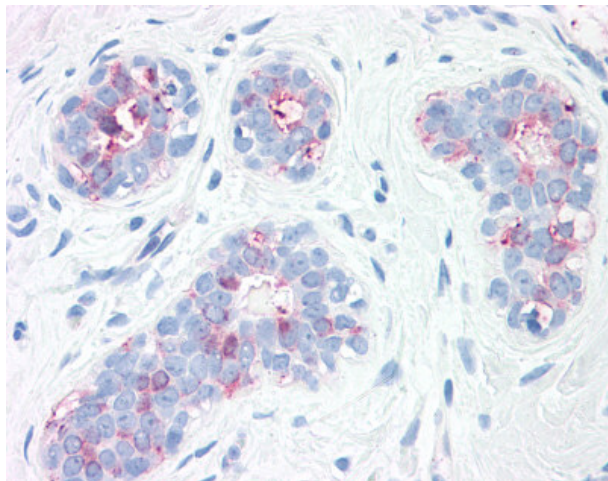
Synaptogyrin 2 (SYNGR2) Rabbit Polyclonal Antibody

Product data:

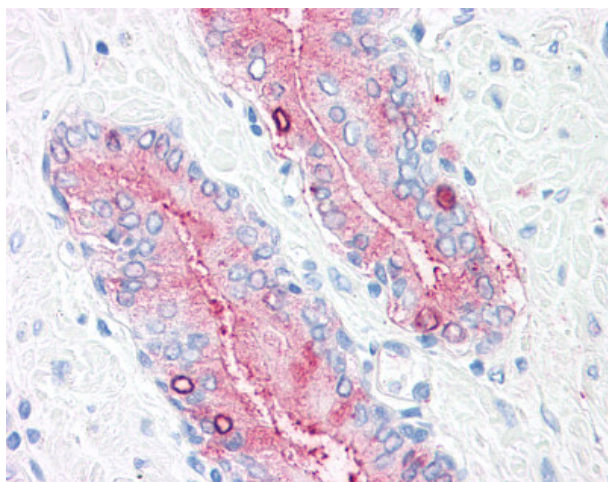
Product Type:	Primary Antibodies
Applications:	IHC
Recommended Dilution:	IHC-P (15 - 20 µg/ml)
Reactivity:	Bovine, Human, Mouse, Rat, Gibbon, Hamster, Horse, Orang-Utan (Predicted: Monkey, Guinea Pig)
Host:	Rabbit
Isotype:	IgG
Clonality:	Polyclonal
Immunogen:	SYNGR2 / Synaptogyrin 2 antibody was raised against synthetic 18 amino acid peptide from internal region of human SYNGR2 / Synaptogyrin 2. Percent identity with other species by BLAST analysis: Human, Orangutan, Gibbon, Monkey, Mouse, Rat, Hamster, Panda, Bovine, Horse (100%); Marmoset, Elephant, Guinea pig (94%); Galago, Dog, Rabbit (89%); Opossum (83%).
Formulation:	PBS, 0.1% sodium azide.
Concentration:	lot specific
Purification:	Immunoaffinity Chromatography
Conjugation:	Unconjugated
Storage:	Store at -20°C as received.
Stability:	Stable for 12 months from date of receipt.
Gene Name:	synaptogyrin 2
Database Link:	NP_004701 Entrez Gene 20973 Mouse Entrez Gene 89815 Rat Entrez Gene 709310 Monkey Entrez Gene 9144 Human O43760
Synonyms:	MGC102914
Note:	Specific for Human SYNGR2 / Synaptogyrin 2. BLAST analysis of the peptide immunogen showed no homology with other human proteins.
Protein Families:	Transmembrane



[View online »](#)

Product images:

Anti-SYNGR2 / Synaptogyrin 2 antibody IHC of human, breast. Immunohistochemistry of formalin-fixed, paraffin-embedded tissue after heat-induced antigen retrieval.



Anti-SYNGR2 / Synaptogyrin 2 antibody IHC of human, prostate. Immunohistochemistry of formalin-fixed, paraffin-embedded tissue after heat-induced antigen retrieval.