

Product datasheet for **TA318844**

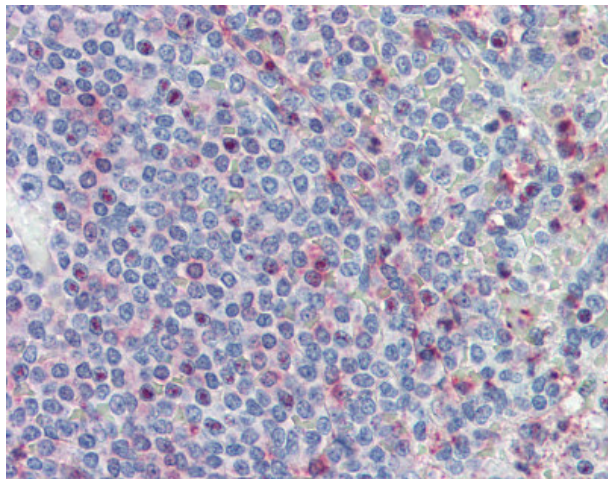
CD70 Rabbit Polyclonal Antibody

Product data:

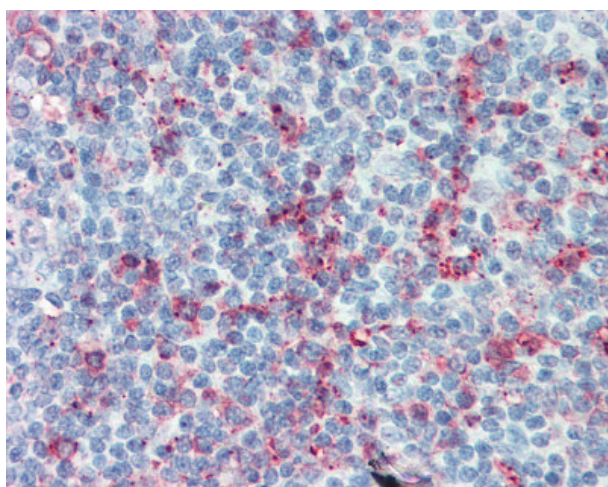
Product Type:	Primary Antibodies
Applications:	IHC
Recommended Dilution:	IHC-P (15 µg/ml)
Reactivity:	Gorilla, Human, Monkey, Gibbon, Orang-Utan
Host:	Rabbit
Isotype:	IgG
Clonality:	Polyclonal
Immunogen:	CD27L / CD70 antibody was raised against synthetic 18 amino acid peptide from internal region of human CD70. Percent identity with other species by BLAST analysis: Human, Gorilla, Orangutan, Gibbon, Monkey (100%); Bovine, Rabbit (83%).
Formulation:	PBS, 0.1% sodium azide.
Concentration:	lot specific
Purification:	Immunoaffinity Chromatography
Conjugation:	Unconjugated
Storage:	Store at -20°C as received.
Stability:	Stable for 12 months from date of receipt.
Gene Name:	CD70 molecule
Database Link:	NP_001243 Entrez Gene 701080 Monkey Entrez Gene 970 Human P32970
Synonyms:	CD27L; CD27LG; TNFSF7
Note:	Specific for Human CD70. BLAST analysis of the peptide immunogen showed no homology with other human proteins.
Protein Families:	ES Cell Differentiation/IPS, Transmembrane
Protein Pathways:	Cytokine-cytokine receptor interaction



[View online »](#)

Product images:

Anti-CD70 antibody IHC of human spleen.
Immunohistochemistry of formalin-fixed,
paraffin-embedded tissue after heat-induced
antigen retrieval.



Anti-CD70 antibody IHC of human tonsil.
Immunohistochemistry of formalin-fixed,
paraffin-embedded tissue after heat-induced
antigen retrieval.