

Product datasheet for **TA318842**

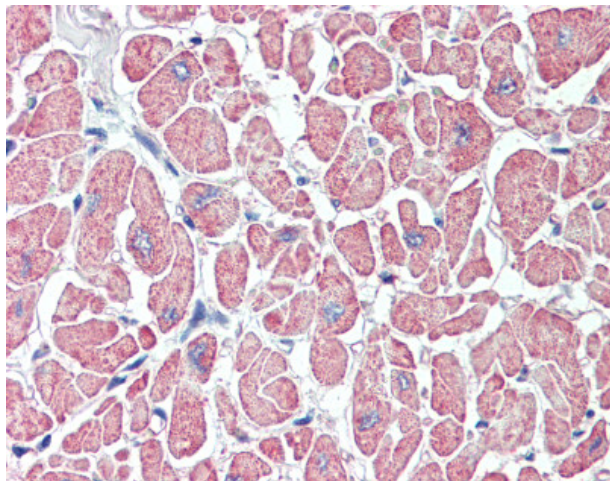
SLITRK6 Rabbit Polyclonal Antibody

Product data:

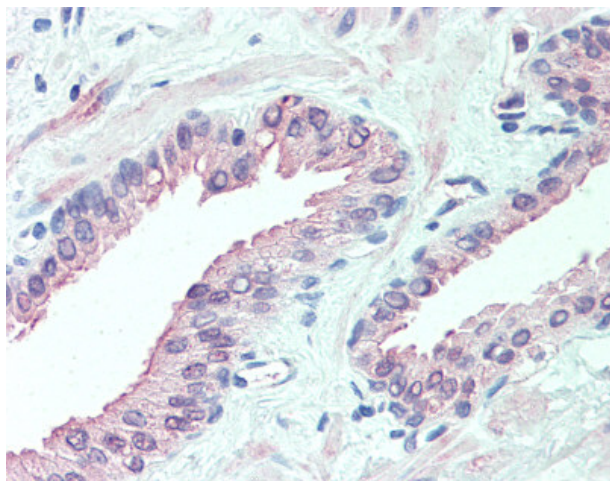
Product Type:	Primary Antibodies
Applications:	IHC
Recommended Dilution:	IHC-P (15 µg/ml)
Reactivity:	Chimpanzee, Human, Rat, Gibbon, Hamster (Predicted: Monkey, Mouse, Pig)
Host:	Rabbit
Isotype:	IgG
Clonality:	Polyclonal
Immunogen:	SLITRK6 antibody was raised against synthetic 16 amino acid peptide from internal region of human SLITRK6. Percent identity with other species by BLAST analysis: Human, Chimpanzee, Gibbon, Monkey, Rat, Hamster (100%); Gorilla, Galago, Marmoset, Mouse, Elephant, Pig (94%); Panda, Bovine, Bat, Dog, Horse, Zebra finch, Chicken (88%); Opossum, Turkey (81%).
Formulation:	PBS, 0.1% sodium azide.
Concentration:	lot specific
Purification:	Immunoaffinity Chromatography
Conjugation:	Unconjugated
Storage:	Store at -20°C as received.
Stability:	Stable for 12 months from date of receipt.
Gene Name:	SLIT and NTRK like family member 6
Database Link:	NP_115605 Entrez Gene 239250 MouseEntrez Gene 290467 RatEntrez Gene 699338 MonkeyEntrez Gene 84189 Human Q9H5Y7
Synonyms:	DFNMYP
Note:	Specific for Human SLITRK6. BLAST analysis of the peptide immunogen showed no homology with other human proteins.
Protein Families:	Druggable Genome, Transmembrane



[View online »](#)

Product images:

Anti-SLITRK6 antibody IHC of human heart. Immunohistochemistry of formalin-fixed, paraffin-embedded tissue after heat-induced antigen retrieval.



Anti-SLITRK6 antibody IHC of human prostate. Immunohistochemistry of formalin-fixed, paraffin-embedded tissue after heat-induced antigen retrieval.