

## Product datasheet for **TA318838**

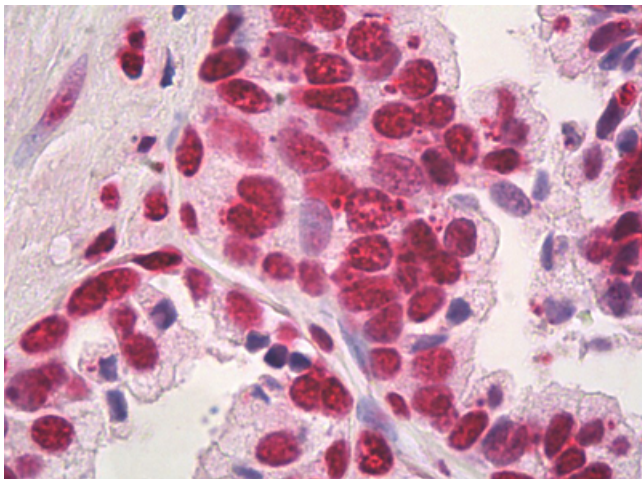
### **HMG1 (HMGB1) Mouse Monoclonal Antibody [Clone ID: IMG19N10B7]**

#### **Product data:**

|                       |   |
|-----------------------|---|
| Product Type:         | Primary Antibodies  |
| Clone Name:           | IMG19N10B7  |
| Applications:         | IHC   |
| Recommended Dilution: | IHC-P (10 µg/ml), WB (1 - 3 µg/ml)  |
| Reactivity:           | Human, Mouse  |
| Host:                 | Mouse   |
| Isotype:              | IgG2b, kappa  |
| Clonality:            | Monoclonal  |
| Immunogen:            | HMG1 / HMGB1 antibody was raised against full-length recombinant human HMGB1 was used as the immunogen.                               |
| Formulation:          | PBS, 0.05% BSA, 0.05% sodium azide  |
| Concentration:        | lot specific  |
| Purification:         | Protein G Column  |
| Conjugation:          | Unconjugated  |
| Storage:              | Store at -20°C as received.   |
| Stability:            | Stable for 12 months from date of receipt.  |
| Gene Name:            | high mobility group box 1   |
| Database Link:        | <a href="#">NP_002119</a><br><a href="#">Entrez Gene 15289 Mouse</a> <a href="#">Entrez Gene 3146 Human</a><br><a href="#">P09429</a> |
| Synonyms:             | HMG1; HMG3; SBP-1   |
| Note:                 | Specific for Human HMGB1  |
| Protein Families:     | Druggable Genome, Stem cell - Pluripotency, Transcription Factors   |
| Protein Pathways:     | Base excision repair  |



[View online »](#)

**Product images:**

Anti-HMGB1 / HMGB1 antibody IHC of human prostate. Immunohistochemistry of formalin-fixed, paraffin-embedded tissue after heat-induced antigen retrieval. Antibody dilution 10 ug/ml.