

## Product datasheet for **TA318812**

### GDF15 Rat Monoclonal Antibody [Clone ID: 6D12.H10.E4]

#### Product data:

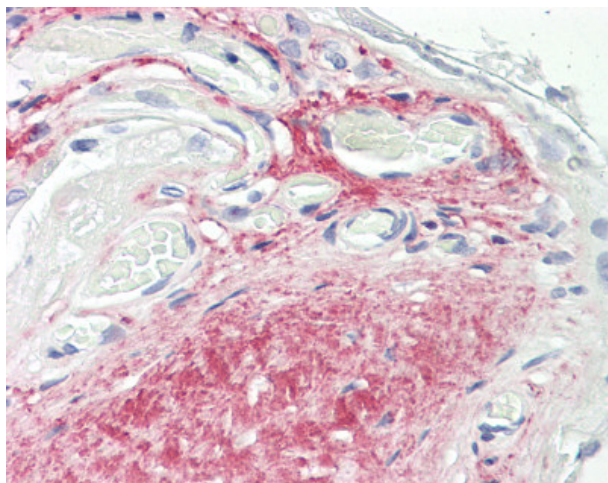
Product Type:	Primary Antibodies
Clone Name:	6D12.H10.E4
Applications:	IHC
Recommended Dilution:	IHC-P (10 µg/ml), WB (1:1000)
Reactivity:	Human, Mouse
Host:	Rat
Isotype:	IgG
Clonality:	Monoclonal
Immunogen:	GDF15 antibody was raised against this Protein-A purified antibody was prepared by repeated immunizations with an MBP-tagged recombinant protein produced in E. coli corresponding to full-length mouse NAG-1 protein. Cross reactivity to MBP was removed via cross-adsorption chromatography.
Formulation:	0.02 M potassium phosphate, 0.15 M sodium chloride, pH 7.2, 0.01% sodium azide, sterile filtered
Concentration:	lot specific
Purification:	Protein G Column
Conjugation:	Unconjugated
Storage:	Store at -20°C as received.
Stability:	Stable for 12 months from date of receipt.
Gene Name:	growth differentiation factor 15
Database Link:	<a href="#">NP_004855</a> <a href="#">Entrez Gene 23886 Mouse</a> <a href="#">Entrez Gene 9518 Human</a> <a href="#">Q99988</a>
Synonyms:	GDF-15; MIC-1; MIC1; NAG-1; PDF; PLAB; PTGFB
Note:	This antibody reacts with the C-terminus of endogenous NAG-1 protein from human tissues. A BLAST analysis suggests reactivity with NAG-1 from chimpanzee and macaque based on a 100% homology. Partial reactivity is expected against rat based on an 86% ...



[View online »](#)

Protein Families: Druggable Genome, Secreted Protein

**Product images:**



Anti-GDF15 antibody IHC of human placenta. Immunohistochemistry of formalin-fixed, paraffin-embedded tissue after heat-induced antigen retrieval. Antibody dilution 10 ug/ml.