

Product datasheet for **TA318709**

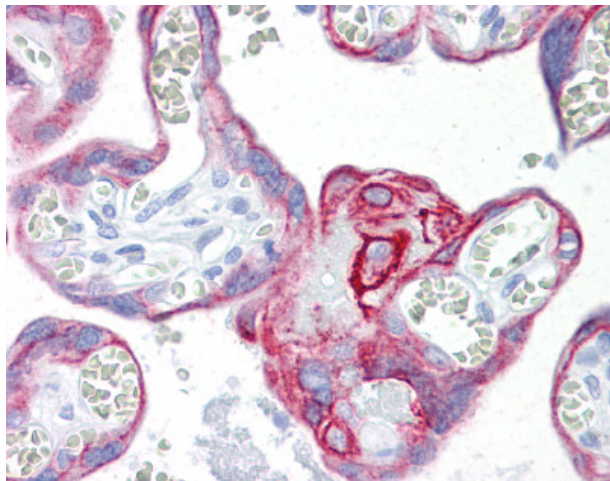
Cytokeratin 7 (KRT7) Mouse Monoclonal Antibody [Clone ID: RCK105]

Product data:

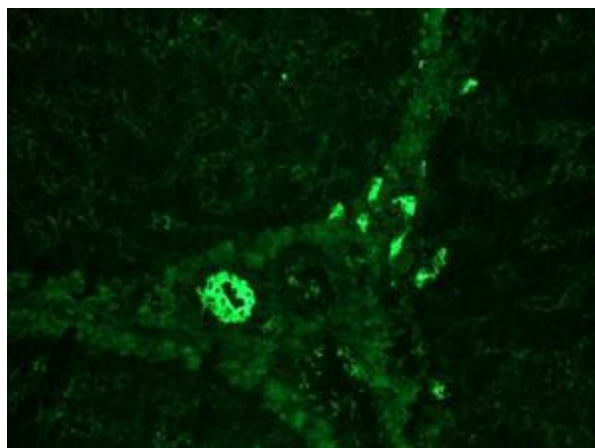
Product Type:	Primary Antibodies
Clone Name:	RCK105
Applications:	IHC
Recommended Dilution:	Flo (1:100 - 1:200), ICC, IHC-Fr (1:100 - 1:200), IHC-P (10 µg/ml), WB (1:100 - 1:1000)
Reactivity:	Feline, Dog, Human, Mouse, Pig, Rat, Hamster
Host:	Mouse
Isotype:	IgG1
Clonality:	Monoclonal
Immunogen:	KRT7 / CK7 / Cytokeratin 7 antibody was raised against cytokeratins from the human bladder carcinoma cell line T24
Formulation:	PBS containing 0.09% sodium azide
Concentration:	lot specific
Purification:	Purified
Conjugation:	Unconjugated
Storage:	Store at -20°C as received.
Stability:	Stable for 12 months from date of receipt.
Gene Name:	keratin 7
Database Link:	NP_005547 Entrez Gene 110310 MouseEntrez Gene 300242 RatEntrez Gene 477602 DogEntrez Gene 3855 Human P08729
Synonyms:	CK7; K2C7; K7; SCL
Note:	Reacts exclusively with cytokeratin 7 which is present in a subgroup of glandular epithelia and their tumors, as well as transitional epithelium and transitional carcinoma.
Protein Families:	ES Cell Differentiation/IPS



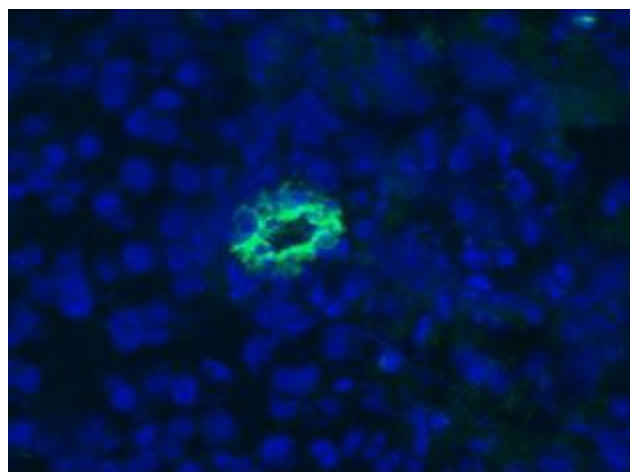
[View online »](#)

Product images:

Anti-KRT7 / Cytokeratin 7 antibody IHC of human placenta. Immunohistochemistry of formalin-fixed, paraffin-embedded tissue after heat-induced antigen retrieval. Antibody concentration 10 ug/ml.



Immunohistochemistry on frozen sections of swine liver, only bile duct epithelium positive; no reaction in hepatocytes



Immunohistochemistry on frozen sections of human liver, only bile duct epithelium positive; no reaction in hepatocytes