

Product datasheet for **TA318697**

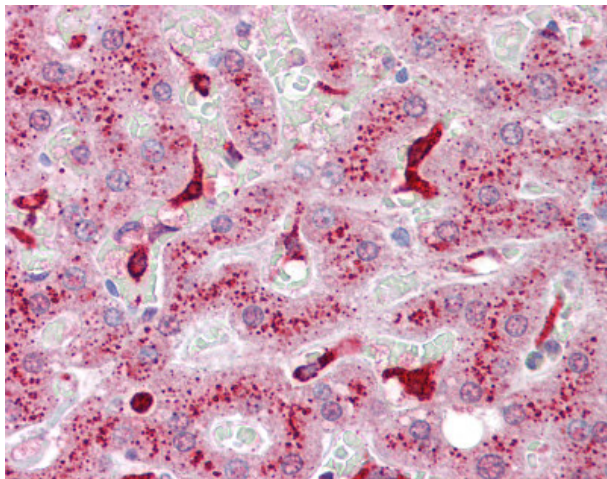
Axin 2 (AXIN2) Rabbit Polyclonal Antibody

Product data:

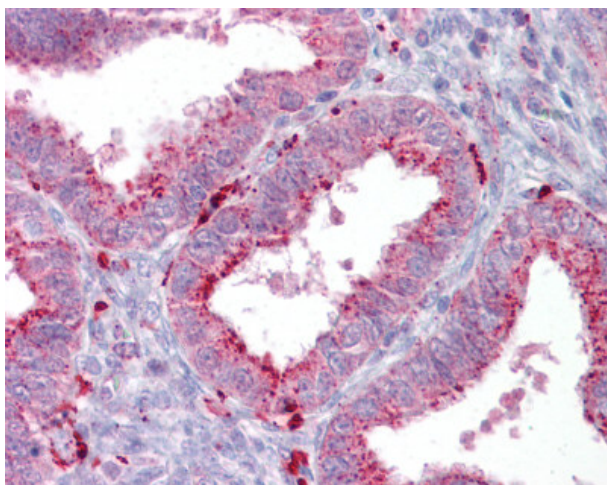
Product Type:	Primary Antibodies
Applications:	IHC
Recommended Dilution:	IHC-P (5 µg/ml), WB (1 - 2 µg/ml)
Reactivity:	Human
Host:	Rabbit
Isotype:	IgG
Clonality:	Polyclonal
Immunogen:	AXIN2 / Axin 2 antibody was raised against a 20 amino acid peptide near the carboxy terminus of human AXIN2
Formulation:	PBS, 0.02% sodium azide
Concentration:	lot specific
Purification:	Immunoaffinity Chromatography
Conjugation:	Unconjugated
Storage:	Store at -20°C as received.
Stability:	Stable for 12 months from date of receipt.
Gene Name:	axin 2
Database Link:	NP_004646 Entrez Gene 8313 Human Q9Y2T1
Synonyms:	AXIL; ODCRCS
Note:	Specific for Human AXIN2. AXIN2 antibody is predicted to not cross-react with AXIN2. At least four isoforms of AXIN2 are known to exist; this antibody will recognize all four.
Protein Families:	Druggable Genome, ES Cell Differentiation/IPS, Induced pluripotent stem cells
Protein Pathways:	Basal cell carcinoma, Colorectal cancer, Endometrial cancer, Pathways in cancer, Wnt signaling pathway



[View online »](#)

Product images:

Anti-AXIN2 / AXIL antibody IHC of human liver. Immunohistochemistry of formalin-fixed, paraffin-embedded tissue after heat-induced antigen retrieval. Antibody concentration 5 ug/ml.



Anti-AXIN2 / AXIL antibody IHC of human uterus. Immunohistochemistry of formalin-fixed, paraffin-embedded tissue after heat-induced antigen retrieval. Antibody concentration 5 ug/ml.