

Product datasheet for **TA318695**

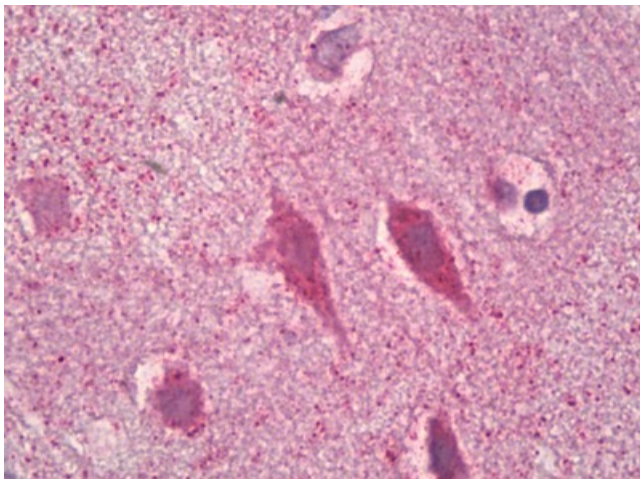
NMDAR1 (GRIN1) Rabbit Polyclonal Antibody

Product data:

Product Type:	Primary Antibodies
Applications:	IHC
Recommended Dilution:	ELISA (1:20000), IHC-P (10 µg/ml), WB (1:500 - 1:1000)
Reactivity:	Human, Mouse, Rat
Host:	Rabbit
Isotype:	IgG
Clonality:	Polyclonal
Immunogen:	GRIN1 / NMDAR1 antibody was raised against synthetic peptide from human NMDAR1 (aa864-913).
Formulation:	PBS (without Mg ²⁺ , Ca ²⁺), pH 7.4, 150 mM sodium chloride, 0.02% sodium azide, 50% glycerol
Concentration:	lot specific
Purification:	Immunoaffinity Chromatography
Conjugation:	Unconjugated
Storage:	Store at -20°C as received.
Stability:	Stable for 12 months from date of receipt.
Gene Name:	glutamate ionotropic receptor NMDA type subunit 1
Database Link:	NP_000823 Entrez Gene 14810 Mouse Entrez Gene 24408 Rat Entrez Gene 2902 Human Q05586
Synonyms:	GluN1; MRD8; NMD-R1; NMDA1; NMDAR1; NR1
Note:	NMDAR1 antibody detects endogenous levels of total NMDAR1 protein.
Protein Families:	Druggable Genome, Ion Channels: Glutamate Receptors, Transmembrane
Protein Pathways:	Alzheimer's disease, Amyotrophic lateral sclerosis (ALS), Calcium signaling pathway, Huntington's disease, Long-term potentiation, Neuroactive ligand-receptor interaction



[View online »](#)

Product images:

Anti-GRIN1 / NMDAR1 antibody IHC of human brain, cortex neurons. Immunohistochemistry of formalin-fixed, paraffin-embedded tissue after heat-induced antigen retrieval. Antibody concentration 10 ug/ml.