

Product datasheet for **TA318675**

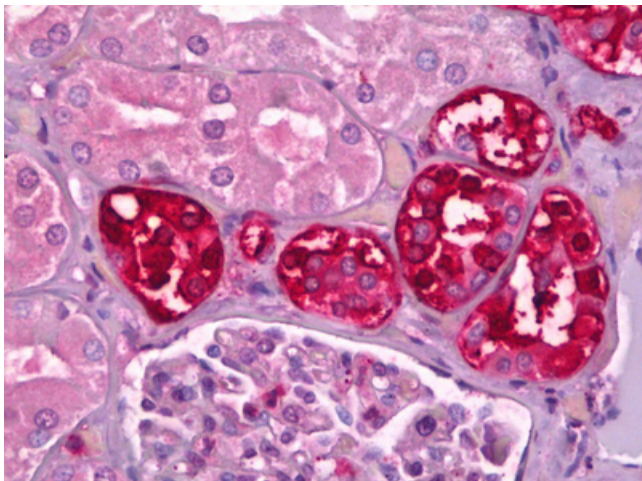
Calbindin (CALB1) Mouse Monoclonal Antibody

Product data:

Product Type:	Primary Antibodies
Applications:	IHC
Recommended Dilution:	ELISA, IHC-P (1:100), IP, WB (1:1000 - 1:2000)
Reactivity:	Human, Mouse, Rat
Host:	Mouse
Isotype:	IgG2a, kappa
Clonality:	Monoclonal
Immunogen:	CALB1 / Calbindin antibody was raised against recombinant human protein purified from E. coli (His-Calbindin1).
Formulation:	10 mM HEPES with 0.15M NaCl, 0.01% BSA, 0.03% sodium azide, and 50% glycerol. Sourced in Ascites.
Purification:	Ammonium Sulfate Precipitation
Conjugation:	Unconjugated
Storage:	Store at -20°C as received.
Stability:	Stable for 12 months from date of receipt.
Gene Name:	calbindin 1
Database Link:	NP_004920 Entrez Gene 12307 Mouse Entrez Gene 83839 Rat Entrez Gene 793 Human P05937
Synonyms:	CALB; D-28K



[View online »](#)

Product images:

Anti-CALB1 / Calbindin antibody IHC of human kidney, tubules. Immunohistochemistry of formalin-fixed, paraffin-embedded tissue after heat-induced antigen retrieval. Antibody dilution 1:100.