

Product datasheet for **TA318627**

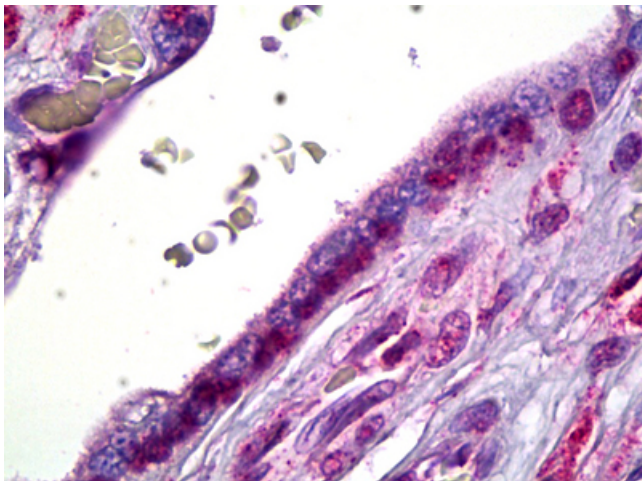
Smoothened (SMO) Mouse Monoclonal Antibody [Clone ID: 3E5]

Product data:

Product Type:	Primary Antibodies
Clone Name:	3E5
Applications:	IHC
Recommended Dilution:	ELISA, IHC-P (5 µg/ml), WB
Reactivity:	Human
Host:	Mouse
Isotype:	IgG2a, kappa
Clonality:	Monoclonal
Immunogen:	Recombinant protein
Formulation:	PBS, pH 7.4.
Purification:	Protein A Column
Conjugation:	Unconjugated
Storage:	Store at -20°C as received.
Stability:	Stable for 12 months from date of receipt.
Gene Name:	smoothened, frizzled class receptor
Database Link:	NP_005622 Entrez Gene 6608 Human Q99835
Synonyms:	FZD11; Gx; SMOH
Note:	Specific for Human SMO / Smoothened
Protein Families:	Druggable Genome, ES Cell Differentiation/IPS, Stem cell relevant signaling - DSL/Notch pathway, Transmembrane
Protein Pathways:	Basal cell carcinoma, Hedgehog signaling pathway, Pathways in cancer



[View online »](#)

Product images:

Anti-SMO antibody IHC of human placenta, cytotrophoblast. Immunohistochemistry of formalin-fixed, paraffin-embedded tissue after heat-induced antigen retrieval. Antibody concentration 5 ug/ml.