

Product datasheet for **TA318626**

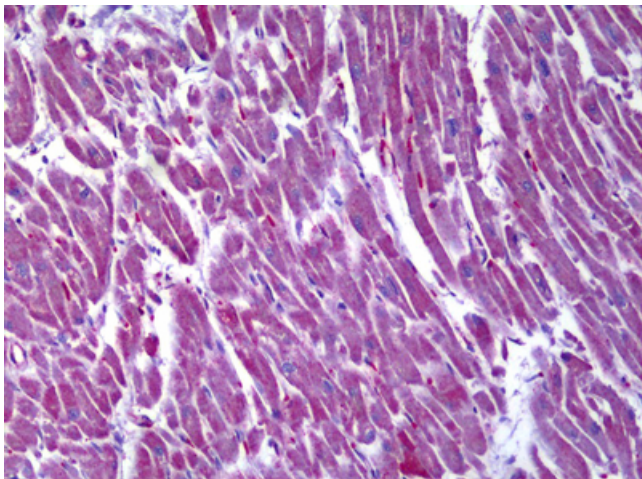
MDH2 Mouse Monoclonal Antibody [Clone ID: 1G12]

Product data:

Product Type:	Primary Antibodies
Clone Name:	1G12
Applications:	IHC
Recommended Dilution:	ELISA, IHC-P (10 µg/ml), WB (1:500 - 1:1000)
Reactivity:	Human
Host:	Mouse
Isotype:	IgG2a, kappa
Clonality:	Monoclonal
Immunogen:	MDH / MDH2 antibody was raised against recombinant protein
Formulation:	PBS, pH 7.2. Sourced in Ascites.
Concentration:	lot specific
Purification:	Protein A Column
Conjugation:	Unconjugated
Storage:	Store at -20°C as received.
Stability:	Stable for 12 months from date of receipt.
Gene Name:	malate dehydrogenase 2
Database Link:	NP_005909 Entrez Gene 4191 Human P40926
Synonyms:	M-MDH; MDH; MGC:3559; MOR1
Note:	Specific for Human MDH2
Protein Families:	Druggable Genome
Protein Pathways:	Citrate cycle (TCA cycle), Glyoxylate and dicarboxylate metabolism, Metabolic pathways, Pyruvate metabolism



[View online »](#)

Product images:

Anti-MDH2 antibody IHC of human heart. Immunohistochemistry of formalin-fixed, paraffin-embedded tissue after heat-induced antigen retrieval. Antibody concentration 10 ug/ml.