

Product datasheet for **TA318617**

RAC1 Mouse Monoclonal Antibody

Product data:

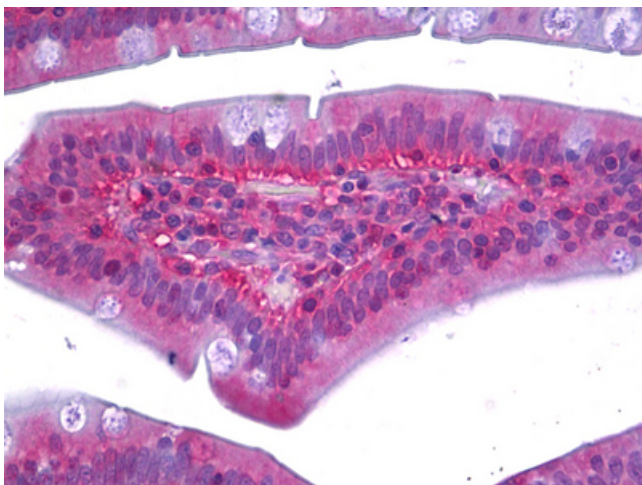
Product Type:	Primary Antibodies
Applications:	IHC
Recommended Dilution:	IHC-P (10 µg/ml), WB (0.5 - 2 µg/ml)
Reactivity:	Human, Mouse, Rat
Host:	Mouse
Isotype:	IgG2b
Clonality:	Monoclonal
Immunogen:	RAC1 antibody was raised against recombinant protein containing the full length human Rac1.
Formulation:	Tris-glycine, pH 7.4, 0.15 M sodium chloride, 0.05% sodium azide.
Concentration:	lot specific
Purification:	Protein G Column
Conjugation:	Unconjugated
Storage:	Store at -20°C as received.
Stability:	Stable for 12 months from date of receipt.
Gene Name:	ras-related C3 botulinum toxin substrate 1 (rho family, small GTP binding protein Rac1)
Database Link:	NP_008839 Entrez Gene 19353 Mouse Entrez Gene 363875 Rat Entrez Gene 5879 Human P63000
Synonyms:	MIG5; p21-Rac1; Rac-1; TC-25
Note:	Recognizes human Rac1 at 21kD. Slight Rac2 cross-reactivity is observed. An additional unknown protein of ~55kD may be detected in some preparations. Species cross-reactivity: mouse and rat.
Protein Families:	Druggable Genome



[View online »](#)

Protein Pathways:

Adherens junction, Amyotrophic lateral sclerosis (ALS), Axon guidance, B cell receptor signaling pathway, Chemokine signaling pathway, Colorectal cancer, Epithelial cell signaling in Helicobacter pylori infection, Fc epsilon RI signaling pathway, Fc gamma R-mediated phagocytosis, Focal adhesion, Leukocyte transendothelial migration, MAPK signaling pathway, Natural killer cell mediated cytotoxicity, Neurotrophin signaling pathway, Pancreatic cancer, Pathways in cancer, Regulation of actin cytoskeleton, Renal cell carcinoma, Toll-like receptor signaling pathway, VEGF signaling pathway, Viral myocarditis, Wnt signaling pathway

Product images:

Anti-RAC1 antibody IHC of human small intestine. Immunohistochemistry of formalin-fixed, paraffin-embedded tissue after heat-induced antigen retrieval. Antibody concentration 10 ug/ml.