

Product datasheet for **TA318606**

RAF1 Mouse Monoclonal Antibody

Product data:

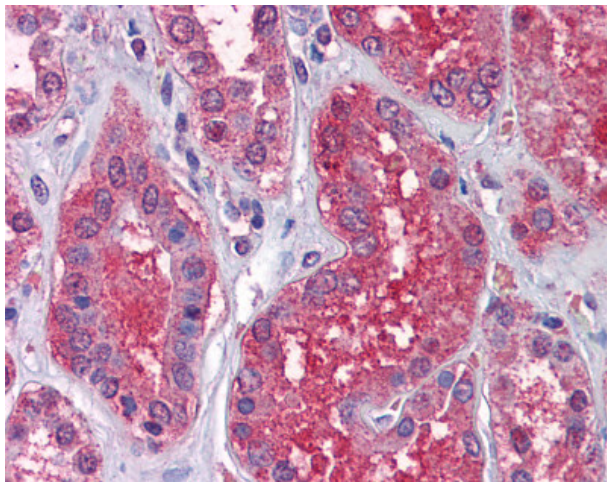
Product Type:	Primary Antibodies
Applications:	IHC
Recommended Dilution:	ELISA, IHC-P (10 µg/ml), WB (1 µg/ml)
Reactivity:	Human
Host:	Mouse
Isotype:	IgG1, kappa
Clonality:	Monoclonal
Immunogen:	RAF1 / RAF antibody was raised against purified recombinant human Raf-1 (75kD).
Formulation:	PBS, pH 7.2, 40% glycerol.
Concentration:	lot specific
Purification:	Protein G Column
Conjugation:	Unconjugated
Storage:	Store at -20°C as received.
Stability:	Stable for 12 months from date of receipt.
Gene Name:	Raf-1 proto-oncogene, serine/threonine kinase
Database Link:	NP_002871 Entrez Gene 5894 Human P04049
Synonyms:	c-Raf; CMD1NN; CRAF; NS5; Raf-1
Note:	Recognizes human Raf-1 N-terminal, aa1-240.
Protein Families:	Druggable Genome, Protein Kinase



[View online »](#)

Protein Pathways:

Acute myeloid leukemia, B cell receptor signaling pathway, Bladder cancer, Chemokine signaling pathway, Chronic myeloid leukemia, Colorectal cancer, Endometrial cancer, ErbB signaling pathway, Fc epsilon RI signaling pathway, Fc gamma R-mediated phagocytosis, Focal adhesion, Gap junction, Glioma, GnRH signaling pathway, Insulin signaling pathway, Long-term depression, Long-term potentiation, MAPK signaling pathway, Melanogenesis, Melanoma, Natural killer cell mediated cytotoxicity, Neurotrophin signaling pathway, Non-small cell lung cancer, Pancreatic cancer, Pathways in cancer, Progesterone-mediated oocyte maturation, Prostate cancer, Regulation of actin cytoskeleton, Renal cell carcinoma, T cell receptor signaling pathway, Vascular smooth muscle contraction, VEGF signaling pathway

Product images:

Anti-RAF1 antibody IHC of human kidney. Immunohistochemistry of formalin-fixed, paraffin-embedded tissue after heat-induced antigen retrieval. Antibody concentration 10 ug/ml.