

Product datasheet for **TA318592**

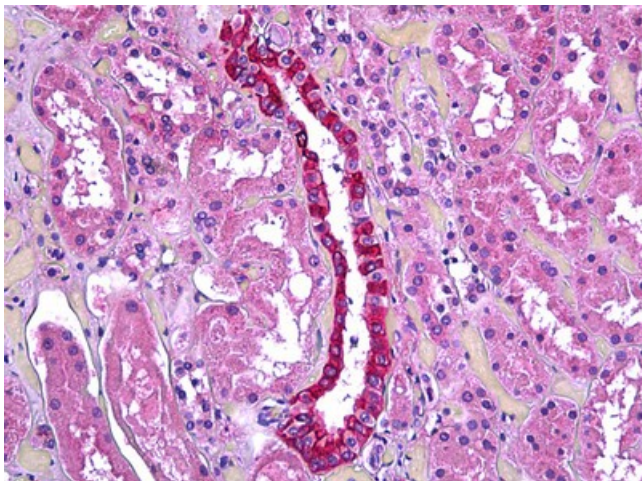
TGFBI Goat Polyclonal Antibody

Product data:

Product Type:	Primary Antibodies
Applications:	IHC
Recommended Dilution:	ELISA (1:32000), IHC-P (3.75 µg/ml), WB (0.2 - 0.5 µg/ml)
Reactivity:	Bat, Bovine, Dog, Gorilla, Human, Mouse, Pig, Rabbit, Rat, Gibbon, Horse (Predicted: Monkey)
Host:	Goat
Clonality:	Polyclonal
Immunogen:	TGFBI antibody was raised against synthetic peptide C-QLYTDRTEKLRPE from an internal region of human TGFBI (NP_000349.1). Percent identity by BLAST analysis: Human, Gorilla, Gibbon, Monkey, Mouse, Rat, Elephant, Panda, Bovine, Dog, Bat, Horse, Rabbit, Pig, Opossum (100%); Marmoset, Platypus (92%).
Formulation:	Tris-buffered saline, pH 7.3, 0.5% BSA, 0.02% sodium azide
Concentration:	lot specific
Purification:	Immunoaffinity Chromatography
Conjugation:	Unconjugated
Storage:	Store at -20°C as received.
Stability:	Stable for 12 months from date of receipt.
Gene Name:	transforming growth factor beta induced
Database Link:	NP_000349 Entrez Gene 21810 Mouse Entrez Gene 116487 Rat Entrez Gene 481519 Dog Entrez Gene 712503 Monkey Entrez Gene 7045 Human Q15582
Synonyms:	BIGH3; CDB1; CDG2; CDGG1; CSD; CSD1; CSD2; CSD3; EBMD; LCD1
Note:	Specific for Human TGFBI.
Protein Families:	Druggable Genome, Secreted Protein, Transmembrane



[View online »](#)

Product images:

Anti-TGFBI antibody IHC of human kidney, renal duct. Immunohistochemistry of formalin-fixed, paraffin-embedded tissue after heat-induced antigen retrieval. Antibody concentration 3.75 ug/ml.