

Product datasheet for **TA318580**

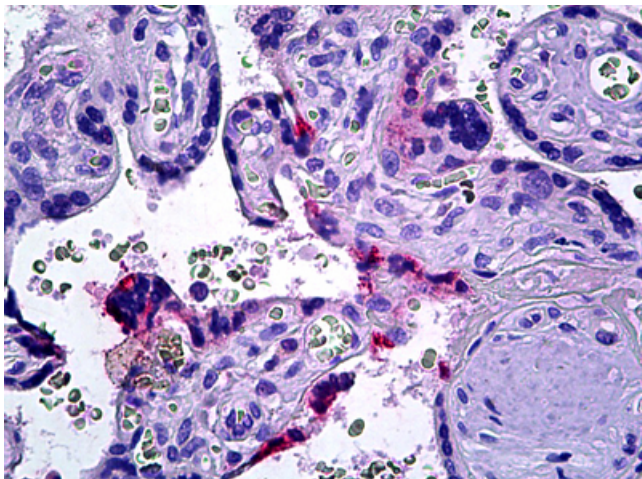
DOK3 Goat Polyclonal Antibody

Product data:

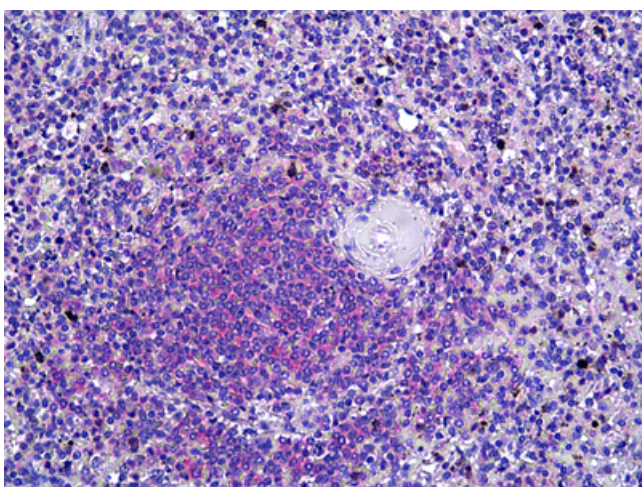
Product Type:	Primary Antibodies
Applications:	IHC
Recommended Dilution:	ELISA (1:64000), IHC-P (6.12 µg/ml), WB (0.1 - 0.3 µg/ml)
Reactivity:	Human (Predicted: Monkey, Mouse, Rat, Hamster, Rabbit)
Host:	Goat
Clonality:	Polyclonal
Immunogen:	DOK3 antibody was raised against synthetic peptide TRERRKGPAPCDRP from the C-terminus of human DOK3 (NP_079148.2). Percent identity by BLAST analysis: Human, Gorilla, Gibbon, Monkey, Marmoset, Mouse, Rat, Hamster, Rabbit (93%); Bovine, Bat (86%).
Formulation:	Tris-buffered saline, pH 7.3, 0.5% BSA, 0.02% sodium azide
Concentration:	lot specific
Purification:	Immunoaffinity Chromatography
Conjugation:	Unconjugated
Storage:	Store at -20°C as received.
Stability:	Stable for 12 months from date of receipt.
Gene Name:	docking protein 3
Database Link:	NP_079148 Entrez Gene 27261 Mouse Entrez Gene 306760 Rat Entrez Gene 700625 Monkey Entrez Gene 79930 Human Q7L591
Synonyms:	DOKL
Note:	Specific for Human DOK3.
Protein Families:	Druggable Genome



[View online »](#)

Product images:

Anti-DOK3 antibody IHC of human placenta. Immunohistochemistry of formalin-fixed, paraffin-embedded tissue after heat-induced antigen retrieval. Antibody concentration 6.125 ug/ml.



Anti-DOK3 antibody IHC of human spleen. Immunohistochemistry of formalin-fixed, paraffin-embedded tissue after heat-induced antigen retrieval. Antibody concentration 6.125 ug/ml.