

## Product datasheet for **TA318463**

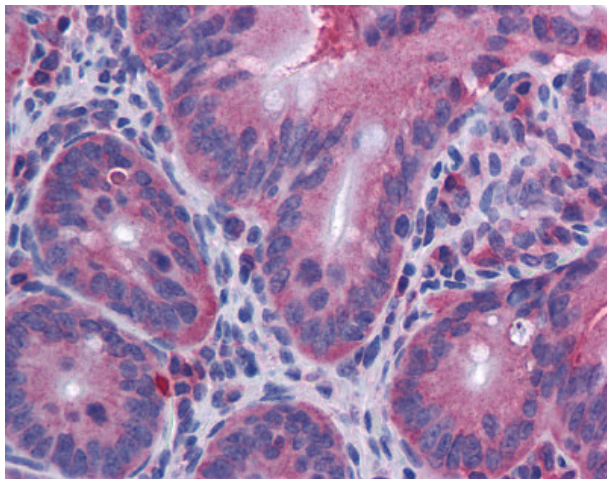
### IL10 Rat Monoclonal Antibody [Clone ID: JES5-2A5]

#### Product data:

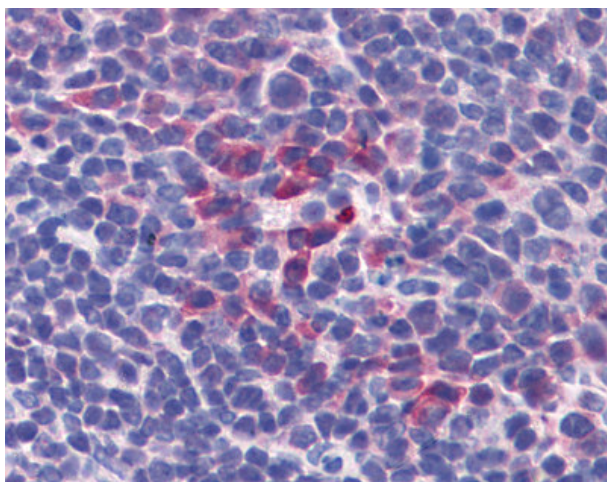
Product Type:	Primary Antibodies
Clone Name:	JES5-2A5
Applications:	IHC
Recommended Dilution:	ELISA, Flo (1:10 - 1:100), IHC-Fr, IHC-P (10 µg/ml), WB (1:1000)
Reactivity:	Mouse
Host:	Rat
Isotype:	IgG1
Clonality:	Monoclonal
Immunogen:	IL10 antibody was raised against recombinant mouse IL-10.
Formulation:	PBS, pH 7.4, 0.09% sodium azide.
Concentration:	lot specific
Purification:	Protein G Column
Conjugation:	Unconjugated
Storage:	Store at -20°C as received.
Stability:	Stable for 12 months from date of receipt.
Gene Name:	interleukin 10
Database Link:	<a href="#">NP_034678</a> <a href="#">Entrez Gene 16153 Mouse</a> <a href="#">P18893</a>
Synonyms:	CSIF; IL-10; IL10A; MGC126450; MGC126451; TGIF
Note:	Recognizes mouse Interleukin-10 (IL-10). IL-10 is expressed by Ly-1 (B-1) B cells that express CD5 (Ly-1) and a subset of lectin stimulated T cells.



[View online »](#)

**Product images:**

Anti-IL-10 antibody IHC of mouse small intestine. Immunohistochemistry of formalin-fixed, paraffin-embedded tissue after heat-induced antigen retrieval. Antibody concentration 10 ug/ml.



Anti-IL-10 antibody IHC of mouse spleen. Immunohistochemistry of formalin-fixed, paraffin-embedded tissue after heat-induced antigen retrieval. Antibody concentration 10 ug/ml.