

Product datasheet for **TA318345**

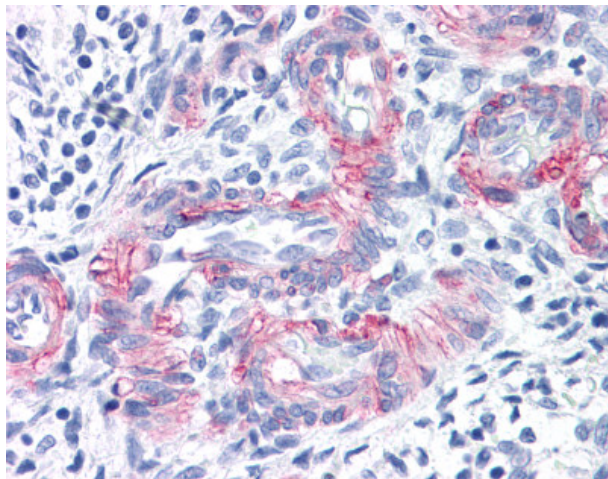
CD146 (MCAM) Mouse Monoclonal Antibody [Clone ID: P1H12]

Product data:

Product Type:	Primary Antibodies
Clone Name:	P1H12
Applications:	IHC
Recommended Dilution:	Flo, IHC-Fr (1 - 10 µg/ml), IHC-P (20 µg/ml), IP, WB (1 - 5 µg/ml)
Reactivity:	Human
Host:	Mouse
Isotype:	IgG1
Clonality:	Monoclonal
Immunogen:	MCAM / CD146 antibody was raised against human umbilical vein cells
Formulation:	PBS, pH 7.2, ≤0.09% sodium azide, BSA and/or gelatin
Concentration:	lot specific
Purification:	Affinity Purified
Conjugation:	Unconjugated
Storage:	Store at -20°C as received.
Stability:	Stable for 12 months from date of receipt.
Gene Name:	melanoma cell adhesion molecule
Database Link:	NP_006491 Entrez Gene 4162 Human P43121
Synonyms:	CD146; MUC18
Protein Families:	Druggable Genome, ES Cell Differentiation/IPS, Transmembrane



[View online »](#)

Product images:

Anti-MCAM / CD146 antibody IHC of human vessels in human uterus. Immunohistochemistry of formalin-fixed, paraffin-embedded tissue after heat-induced antigen retrieval. Antibody concentration 20 ug/ml.