

## Product datasheet for **TA318277**

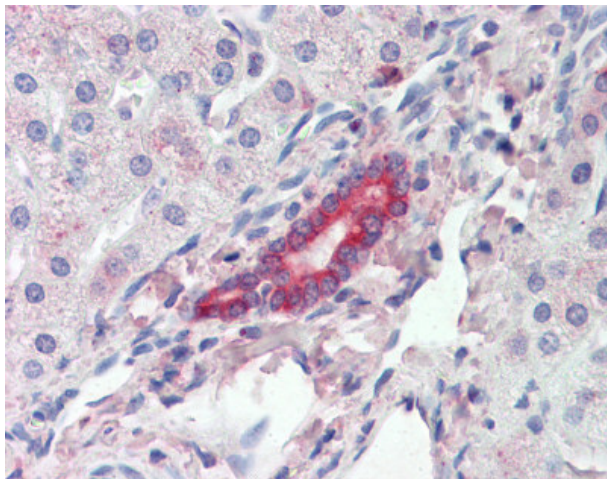
### ROR1 Goat Polyclonal Antibody

#### Product data:

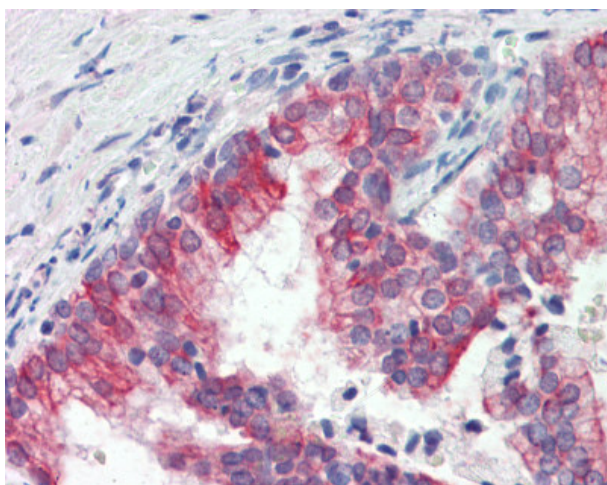
Product Type:	Primary Antibodies
Applications:	IHC
Recommended Dilution:	ELISA, IHC-P (3 - 6 µg/ml)
Reactivity:	Gorilla, Human, Gibbon (Predicted: Monkey, Mouse, Rat, Bat, Bovine, Dog, Hamster, Horse, Rabbit)
Host:	Goat
Clonality:	Polyclonal
Immunogen:	ROR1 antibody was raised against synthetic peptide C-GNKSQKPYKIDSKQA from the C-terminus (near) of human ROR1 (NP_005003.2). Percent identity by BLAST analysis: Human, Gorilla, Gibbon (100%); Monkey, Marmoset, Mouse, Rat, Hamster, Elephant, Panda, Dog, Bat, Bovine, Horse, Rabbit, Lizard (93%); Turkey, Chicken (87%); Platypus (80%).
Formulation:	Tris-buffered saline, pH 7.3, 0.5% BSA, 0.02% sodium azide
Concentration:	lot specific
Purification:	Immunoaffinity Chromatography
Conjugation:	Unconjugated
Storage:	Store at -20°C as received.
Stability:	Stable for 12 months from date of receipt.
Gene Name:	receptor tyrosine kinase-like orphan receptor 1
Database Link:	<a href="#">NP_005003</a> <a href="#">Entrez Gene 26563 Mouse</a> <a href="#">Entrez Gene 362550 Rat</a> <a href="#">Entrez Gene 489557 Dog</a> <a href="#">Entrez Gene 700760 Monkey</a> <a href="#">Entrez Gene 4919 Human Q01973</a>
Synonyms:	dj537f10.1; NTRKR1
Note:	Specific for Human ROR1. This antibody is expected to recognize isoform 1 (NP_005003.2) only.
Protein Families:	Druggable Genome, Protein Kinase, Transmembrane



[View online »](#)

**Product images:**

Anti-ROR1 antibody IHC of human liver. Immunohistochemistry of formalin-fixed, paraffin-embedded tissue after heat-induced antigen retrieval. Antibody concentration 3 ug/ml.



Anti-ROR1 antibody IHC of human prostate. Immunohistochemistry of formalin-fixed, paraffin-embedded tissue after heat-induced antigen retrieval. Antibody concentration 3 ug/ml.