

## Product datasheet for **TA318240**

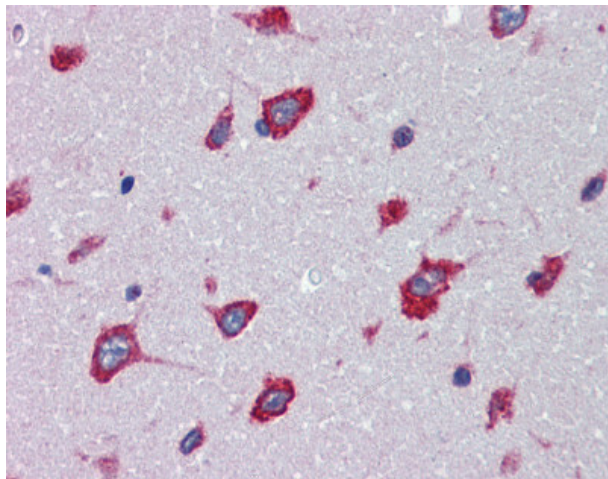
### SRPX2 Rabbit Polyclonal Antibody

#### Product data:

Product Type:	Primary Antibodies
Applications:	IHC
Recommended Dilution:	IHC-P (10 µg/ml)
Reactivity:	Chimpanzee, Gorilla, Human, Monkey, Orang-Utan (Predicted: Mouse, Rat, Bat, Bovine, Dog, Hamster, Horse, Pig, Guinea Pig)
Host:	Rabbit
Isotype:	IgG
Clonality:	Polyclonal
Immunogen:	SRPX2 antibody was raised against synthetic 14 amino acid peptide from C-Terminus of human SRPX2. Percent identity with other species by BLAST analysis: Human, Chimpanzee, Gorilla, Orangutan, Monkey, Marmoset (100%); Mouse, Rat, Hamster, Elephant, Panda, Dog, Bat, Bovine, Horse, Pig, Guinea pig (93%); Galago, Rabbit (86%).
Formulation:	PBS, 0.1% sodium azide.
Purification:	Immunoaffinity Chromatography
Conjugation:	Unconjugated
Storage:	Store at -20°C as received.
Stability:	Stable for 12 months from date of receipt.
Gene Name:	sushi repeat containing protein, X-linked 2
Database Link:	<a href="#">NP_055282</a> <a href="#">Entrez Gene 68792 Mouse</a> <a href="#">Entrez Gene 317181 Rat</a> <a href="#">Entrez Gene 492014 Dog</a> <a href="#">Entrez Gene 700756 Monkey</a> <a href="#">Entrez Gene 27286 Human</a> <a href="#">O60687</a>
Synonyms:	BPP; CBPS; PMGX; RESDX; SRPUL
Note:	Specific for Human SRPX2. BLAST analysis of the peptide immunogen showed no homology with other human proteins.
Protein Families:	Druggable Genome, Secreted Protein



[View online »](#)

**Product images:**

Anti-SRPX2 antibody IHC of human brain, cortex. Immunohistochemistry of formalin-fixed, paraffin-embedded tissue after heat-induced antigen retrieval.