

Product datasheet for **TA318238**

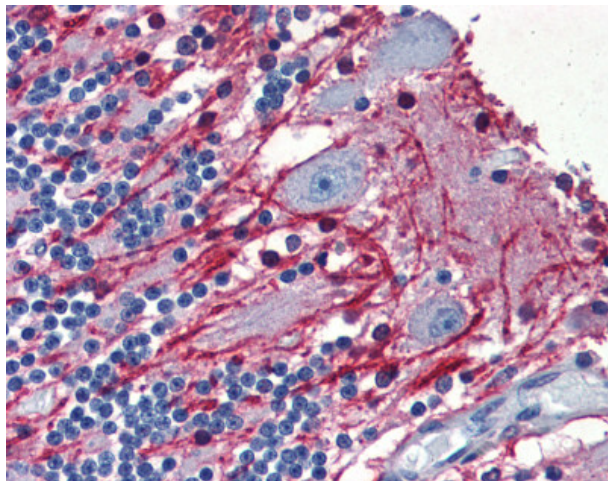
Myelin Basic Protein (MBP) Mouse Monoclonal Antibody [Clone ID: V/h5]

Product data:

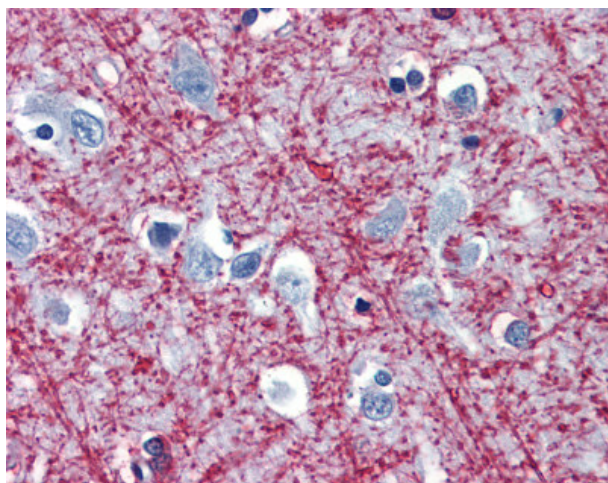
Product Type:	Primary Antibodies
Clone Name:	V/h5
Applications:	IHC
Recommended Dilution:	ELISA, IHC-P (10 µg/ml), RIA
Reactivity:	Bovine, Guinea Pig, Human, Rabbit, Sheep
Host:	Mouse
Isotype:	IgG1
Clonality:	Monoclonal
Immunogen:	Myelin Basic Protein / MBP antibody was raised against synthetic peptide corresponding to the amino acids 45 - 91 of the native molecule conjugated to BSA. N-terminal fragment of human MBP (residues 1-118) produced by BNPS-skatole cleavage of pure human MBP, injected coupled to BSA using carbodiimide.
Formulation:	PBS, 0.09% sodium azide.
Concentration:	lot specific
Purification:	Protein A Column
Conjugation:	Unconjugated
Storage:	Store at -20°C as received.
Stability:	Stable for 12 months from date of receipt.
Gene Name:	myelin basic protein
Database Link:	NP_002376 Entrez Gene 4155 Human P02686
Synonyms:	MGC99675
Note:	Recognizes predominantly residues 45-91



[View online »](#)

Product images:

Anti-Myelin Basic Protein antibody IHC of human brain, cerebellum. Immunohistochemistry of formalin-fixed, paraffin-embedded tissue after heat-induced antigen retrieval. Antibody concentration 10 ug/ml.



Anti-Myelin Basic Protein antibody IHC of human brain, cortex. Immunohistochemistry of formalin-fixed, paraffin-embedded tissue after heat-induced antigen retrieval. Antibody concentration 10 ug/ml.