

Product datasheet for **TA318194**

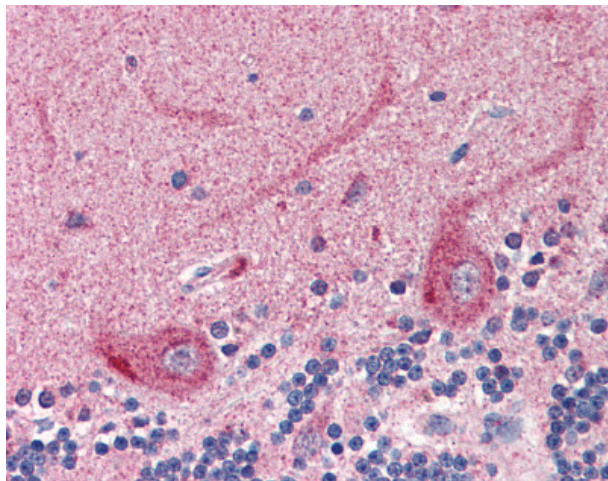
SLC22A17 Goat Polyclonal Antibody

Product data:

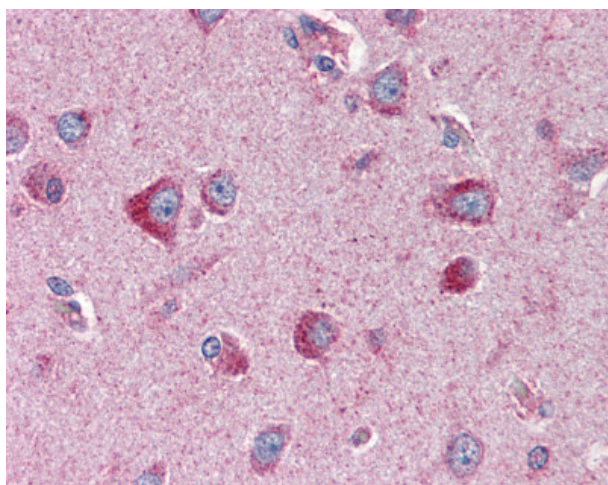
Product Type:	Primary Antibodies
Applications:	IHC
Recommended Dilution:	ELISA (1:64000), IHC-P (2 µg/ml)
Reactivity:	Bat, Bovine, Dog, Gorilla, Human, Monkey, Mouse, Pig, Rat, Gibbon, Hamster, Horse (Predicted: Rabbit)
Host:	Goat
Clonality:	Polyclonal
Immunogen:	SLC22A17 antibody was raised against synthetic peptide C-PETKRKLLPEVLRD from an internal region of human SLC22A17 (NP_065105.2; NP_057693.3). Percent identity by BLAST analysis: Human, Gorilla, Gibbon, Monkey, Marmoset, Mouse, Rat, Hamster, Panda, Dog, Bat, Bovine, Horse, Pig (100%); Elephant, Rabbit (93%).
Formulation:	Tris-buffered saline, pH 7.3, 0.5% BSA, 0.02% sodium azide
Concentration:	lot specific
Purification:	Immunoaffinity Chromatography
Conjugation:	Unconjugated
Storage:	Store at -20°C as received.
Stability:	Stable for 12 months from date of receipt.
Gene Name:	solute carrier family 22 member 17
Database Link:	NP_057693 Entrez Gene 59049 Mouse Entrez Gene 305886 Rat Entrez Gene 608168 Dog Entrez Gene 713765 Monkey Entrez Gene 51310 Human Q8WUG5
Synonyms:	24p3R; BOCT; BOIT; hBOIT; NGALR; NGALR2; NGALR3
Note:	Specific for Human SLC22A17. This antibody is expected to recognize both reported isoforms NP_065105.2 and NP_057693.3).
Protein Families:	Druggable Genome, Transmembrane



[View online »](#)

Product images:

Anti-SLC22A17 antibody IHC of human brain, cerebellum. Immunohistochemistry of formalin-fixed, paraffin-embedded tissue after heat-induced antigen retrieval. Antibody concentration 2 ug/ml.



Anti-SLC22A17 antibody IHC of human brain, cortex. Immunohistochemistry of formalin-fixed, paraffin-embedded tissue after heat-induced antigen retrieval. Antibody concentration 2 ug/ml.