

## Product datasheet for **TA318150**

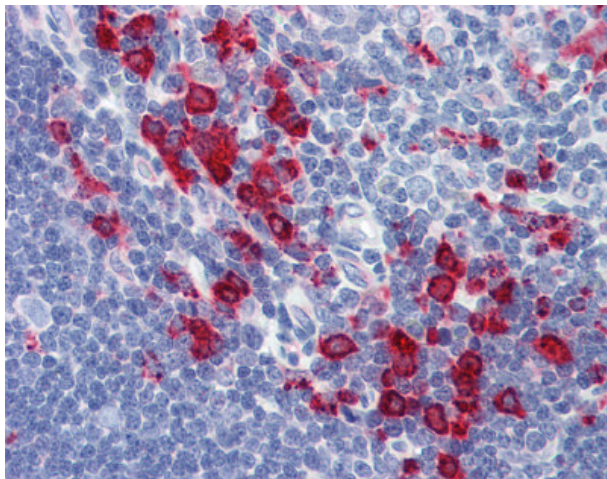
### CD68 Mouse Monoclonal Antibody

#### Product data:

Product Type:	Primary Antibodies
Applications:	IHC
Recommended Dilution:	IHC-P (1:50)
Reactivity:	Feline, Human, Monkey, Rat
Host:	Mouse
Isotype:	IgG1, kappa
Clonality:	Monoclonal
Immunogen:	CD68 antibody was raised against subcellular fraction of human alveolar macrophages. Cellular Localization: Cytoplasmic.
Formulation:	10 mM PBS, pH 7.4, 0.2% BSA, 0.09% sodium azide.
Concentration:	lot specific
Purification:	Protein G Column
Conjugation:	Unconjugated
Storage:	Store at -20°C as received.
Stability:	Stable for 12 months from date of receipt.
Gene Name:	CD68 molecule
Database Link:	<a href="#">NP_001242</a> <a href="#">Entrez Gene 287435 Rat</a> <a href="#">Entrez Gene 715923 Monkey</a> <a href="#">Entrez Gene 968 Human</a> <a href="#">P34810</a>
Synonyms:	GP110; LAMP4; SCARD1
Note:	Recognizes the human glycoprotein of 110kD, which is identified as CD68. Species cross-reactivity: Monkey, feline, rat. Does not react with porcine, canine, chicken.
Protein Families:	Druggable Genome, Transmembrane
Protein Pathways:	Lysosome



[View online »](#)

**Product images:**

Anti-CD68 antibody IHC of human thymus. Immunohistochemistry of formalin-fixed, paraffin-embedded tissue after heat-induced antigen retrieval. Antibody dilution 1:50.