

## Product datasheet for **TA318099**

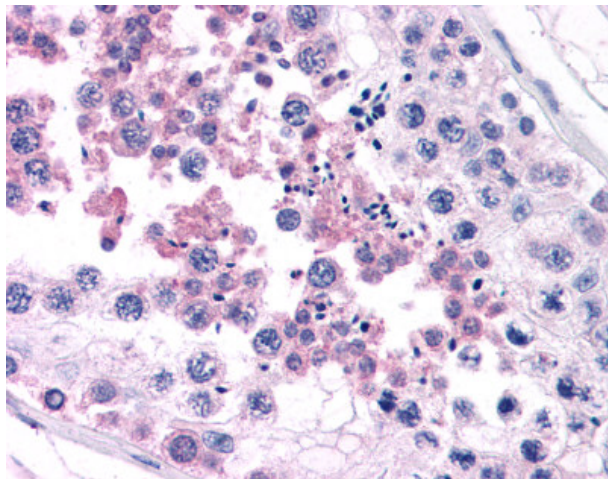
### Cathelicidin (CAMP) Rabbit Polyclonal Antibody

#### Product data:

|                       |   |
|-----------------------|---|
| Product Type:         | Primary Antibodies  |
| Applications:         | IHC   |
| Recommended Dilution: | ELISA, IHC-P (5 µg/ml), WB (1 µg/ml)  |
| Reactivity:           | Human   |
| Host:                 | Rabbit  |
| Isotype:              | IgG   |
| Clonality:            | Polyclonal  |
| Immunogen:            | LL37 / CAMP / Cathelicidin antibody was raised against 17 amino acid peptide near the carboxy terminus of the human Cathelicidin. |
| Formulation:          | PBS, 0.02% sodium azide.  |
| Concentration:        | lot specific  |
| Purification:         | Immunoaffinity Chromatography   |
| Conjugation:          | Unconjugated  |
| Storage:              | Store at -20°C as received.   |
| Stability:            | Stable for 12 months from date of receipt.  |
| Gene Name:            | cathelicidin antimicrobial peptide  |
| Database Link:        | <a href="#">NP_004336</a><br><a href="#">Entrez Gene 820 Human</a><br><a href="#">P49913</a>                                      |
| Synonyms:             | CAP-18; CAP18; CRAMP; FALL-39; FALL39; HSD26; LL37  |
| Protein Families:     | Secreted Protein, Transmembrane   |



[View online »](#)

**Product images:**

Anti-CAMP antibody IHC of human testis. Immunohistochemistry of formalin-fixed, paraffin-embedded tissue after heat-induced antigen retrieval. Antibody concentration 5 ug/ml.