

## Product datasheet for **TA318059**

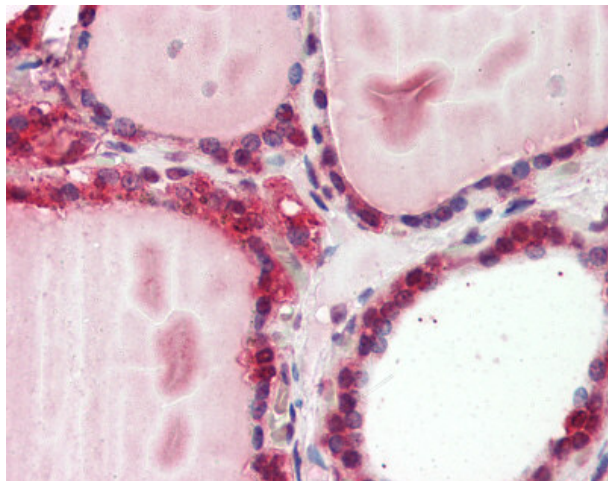
### Cathepsin K (CTSK) Rabbit Polyclonal Antibody

#### Product data:

Product Type:	Primary Antibodies
Applications:	IHC
Recommended Dilution:	IHC-P (2.5 µg/ml), IP, WB (0.5 - 4 µg/ml)
Reactivity:	Chicken, Human, Mouse, Pig, Rabbit, Rat
Host:	Rabbit
Isotype:	IgG
Clonality:	Polyclonal
Immunogen:	CTSK / Cathepsin K antibody was raised against synthetic peptide surrounding amino acid 321 of rat cathepsin K.
Formulation:	PBS, pH 7.2, 30% glycerol, 0.5% BSA, 0.01% Thimerosal.
Concentration:	lot specific
Purification:	Protein A Column
Conjugation:	Unconjugated
Storage:	Store at -20°C as received.
Stability:	Stable for 12 months from date of receipt.
Gene Name:	cathepsin K
Database Link:	<a href="#">NP_000387</a> <a href="#">Entrez Gene 13038 Mouse</a> <a href="#">Entrez Gene 29175 Rat</a> <a href="#">Entrez Gene 1513 Human</a> <a href="#">P43235</a>
Synonyms:	CTSO2; CTSO; CTSO1; CTSO2; PKND; PYCD
Note:	The antibody detects proform (43 kD) and the mature form (29 kD) of cathepsin K.
Protein Families:	Druggable Genome, Protease
Protein Pathways:	Lysosome



[View online »](#)

**Product images:**

Anti-CTSK / Cathepsin K antibody IHC of human thyroid. Immunohistochemistry of formalin-fixed, paraffin-embedded tissue after heat-induced antigen retrieval. Antibody concentration 5 ug/ml.