

Product datasheet for **TA318049**

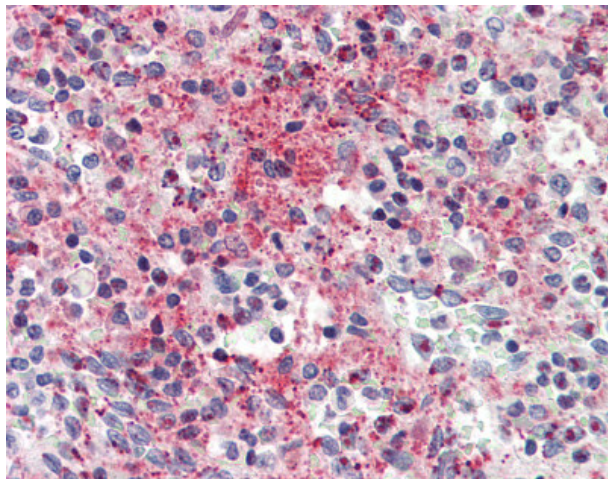
RANTES (CCL5) Mouse Monoclonal Antibody [Clone ID: 8.PP.11]

Product data:

| | |
|-----------------------|---|
| Product Type: | Primary Antibodies |
| Clone Name: | 8.PP.11 |
| Applications: | IHC |
| Recommended Dilution: | ELISA (2 - 4 µg/ml), IHC-P (5 µg/ml), Neut |
| Reactivity: | Human |
| Host: | Mouse |
| Isotype: | IgG2b |
| Clonality: | Monoclonal |
| Immunogen: | CCL5 / RANTES antibody was raised against rANTES. |
| Formulation: | PBS |
| Concentration: | lot specific |
| Purification: | Protein A Column |
| Conjugation: | Unconjugated |
| Storage: | Store at -20°C as received. |
| Stability: | Stable for 12 months from date of receipt. |
| Gene Name: | C-C motif chemokine ligand 5 |
| Database Link: | NP_002976 Entrez Gene 6352 Human P13501 |
| Synonyms: | D17S136E; eoCP; RANTES; SCYA5; SIS-delta; SISd; TCP228 |
| Note: | Recognizes human RANTES. |
| Protein Families: | Druggable Genome, Secreted Protein, Transmembrane |
| Protein Pathways: | Chemokine signaling pathway, Cytokine-cytokine receptor interaction, Cytosolic DNA-sensing pathway, Epithelial cell signaling in Helicobacter pylori infection, NOD-like receptor signaling pathway, Prion diseases, Toll-like receptor signaling pathway |



[View online »](#)

Product images:

Anti-CCL5 / RANTES antibody IHC of human spleen. Immunohistochemistry of formalin-fixed, paraffin-embedded tissue after heat-induced antigen retrieval. Antibody concentration 5 ug/ml.