

Product datasheet for **TA318043**

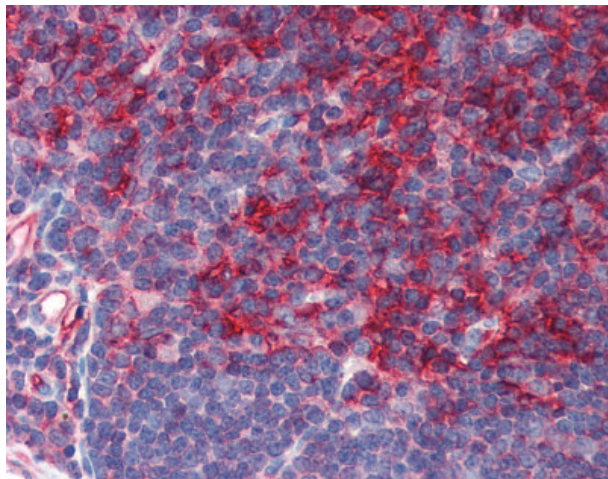
beta 2 Microglobulin (B2M) Mouse Monoclonal Antibody

Product data:

Product Type:	Primary Antibodies
Applications:	IHC
Recommended Dilution:	ELISA, Flo (1 µg/ml), IHC-P (10 µg/ml), IP, WB (2 - 4 µg/ml)
Reactivity:	Human
Host:	Mouse
Isotype:	IgG2a
Clonality:	Monoclonal
Immunogen:	B2M / Beta 2 Microglobulin antibody was raised against purified human b2-microglobulin.
Formulation:	PBS, pH 7.4, 15 mM sodium azide
Purification:	DEAE-column Chromatography
Conjugation:	Unconjugated
Storage:	Store at -20°C as received.
Stability:	Stable for 12 months from date of receipt.
Gene Name:	beta-2-microglobulin
Database Link:	NP_004039 Entrez Gene 567 Human P61769
Synonyms:	IMD43
Note:	Recognizes human b2-microglobulin associated with cell-surface MHC Class I molecules and other membrane antigens as well as soluble human b2-microglobulin. Does not cross-react with mouse, bovine, rabbit, dog or chicken b2-microglobulin.
Protein Families:	Druggable Genome, Secreted Protein
Protein Pathways:	Antigen processing and presentation



[View online »](#)

Product images:

Anti-B2M antibody IHC of human thymus. Immunohistochemistry of formalin-fixed, paraffin-embedded tissue after heat-induced antigen retrieval. Antibody concentration 10 ug/ml.